



2020 PRODUCT CATALOG

Sea-Lect Designs



PRICES

F.O.B. Everett, WA. All prices subject to change without notice.

PAYMENT & CREDIT

Credit cards are preferred; however we can extend credit to firms with a satisfactory credit rating who have furnished credit references. Credit card and COD shipments will be made to new accounts until credit has been established. Accounts that exceed 30 days past due will be placed on COD terms and may be required to complete a new credit application to be placed on open account again.

FREIGHT

All freight charges are invoiced with each order as a separate amount at the bottom of the invoice. There is no discount allowed on freight. Sea-Lect Designs utilizes UPS for parcel shipments and will price shop all LTL shipments to supply the best available rate. If you desire to use your own carrier, a valid account number must be provided at the time of order to ship freight collect; all related charges (freight, duties, taxes, pickup and delivery charges, etc.) will be billed by your chosen carrier and are not deductible from Sea-Lect Designs invoice. Any freight charges reversed to Sea-Lect Designs will be back charged to your account.

MINIMUM ORDER

We can accommodate special orders and do not require a minimum dollar amount for ordering; however, if an order is less than \$50, a \$5 handling fee will be charged. We also reserve the right to require minimum total yearly dollar sales amounts to be met to maintain an account.

RETURNS

A Return Goods Authorization (RGA) number must be obtained within 90 days of purchase prior to any return. Credit will not be issued for goods returned without prior authorization. Special order items cannot be returned. All returned Sea-Lect Designs products must include:

- 1) A Listing of Items Being Returned
- 2) The Date of Purchase
- 3) Invoice Number
- 4) Sea-lect Designs Order Number
- 5) Reason for Return

Please identify any defects in as much detail as possible. All non-warranty items returned must be in original packaging, in like new condition, and available for resale. Returned items are subject to a minimum 15% restocking charge. Please do not deduct from your payment until you have received our credit memo. Our street address for returns is 3402 Smith Avenue, Everett, Washington 98201.

BACK ORDERS

Our standard policy is to ship all back orders. If back orders are not desired, please specify on every order, or inquire as to how we can change your account status to prevent all future backorders. We reserve the right to cancel any items on the original order where an extended delivery time is expected. We offer a freight allowance on backordered items when shipped, and freight charges on backordered items do not need to be paid on orders within the continental U.S. provided our preferred carrier is used. Shipments to Canada, Alaska, and Hawaii incur 1/2 freight charge. Freight on backordered items is allowed only if taken when invoice is paid and invoice is paid within terms. There is no discount allowed on freight and there must not be any outstanding overdue invoices on your account. COD accounts are not eligible for freight deduction on backordered items. If you desire another carrier than our preferred you will not be allowed to deduct freight charges.

DELIVERY

We will make every effort to ship urgent orders (UPS 1st, 2nd or 3rd Day Air, etc.) received by 1:00 pm Pacific Time the same day.

DAMAGED OR DEFECTIVE GOODS

Any goods received damaged or defective can be returned following our return policy stated above. If determined to be defective or damaged at the time of shipment, we will either repair or replace at no charge or issue credit - however, no allowances will be made for labor involved in the removal or reinstallation of these items. Any goods damaged in shipment need to be claimed with the carrier at time of arrival.

CONDITIONS

Typographical and stenographic errors subject to correction. Purchaser terms inconsistent with those stated herein which may appear on purchaser's formal order will not be binding to Sea-Lect Designs.

CONTACT

BILLING ADDRESS
Sea-Lect Designs
PO Box 67
Everett, WA 98206
United States

SHIP-TO ADDRESS
Sea-Lect Designs
3402 Smith Avenue
Everett, WA 98201
United States

CUSTOMER SERVICE

HOURS 8:00am - 5:00pm PST
PHONE (425) 252-2149
FAX (425) 339-1345
E-MAIL info@sealectdesigns.com

WHY ARE PROPOSITION 65 WARNINGS IN OUR SEA-LECT DESIGN CATALOG?

We at Sea-Lect Designs strive to do the right thing as a responsible manufacturer. While no changes have been made to our products that have been in our catalog for years, and even though the Prop 65 label is only a California requirement, Sea-Lect Designs, out of an abundance of caution, is labeling all Prop 65 items regardless of their intended destination.

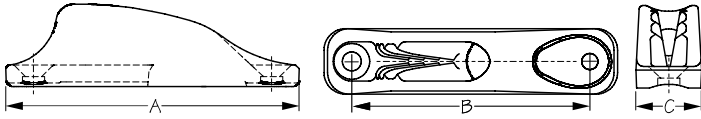
So, as part of California's Right to Know, you will see Prop 65 warnings on some of our product packaging, in our catalog, and on our web site.

Prop 65 was enacted in 1986 for California only. Its intent was to protect drinking water sources from being contaminated with chemicals known to cause cancer, birth defects, or other reproductive harm. Since its inception, it has grown to include approximately 1000 chemicals, many of which are found in common household items.

Labeled products for Sea-Lect Designs predominantly fall into three categories as pertains to Prop 65: Those containing brass, those with a galvanized finish, or those containing PVC. All brass contains lead, as does galvanizing solution. PVC, commonly used in wiring products, contains vinyl chloride. Both of these substances are listed as chemicals known to the state of California to cause cancer or reproductive toxicity.

For additional information on Prop 65 visit:
www.P65Warnings.ca.gov





CLAMCLEAT® JR.

Injection Molded Nylon



Bulk	Display	A	B	C	Line Size	Color	Fastener	Wt.(lb.)	Std. Pack
K002030	K002030-1	3-1/4"	2-5/8"	11/16"	1/8"-1/4"	Black	#8 OH	.04	10 ea



CLAMCLEAT® JR. KIT

Injection Molded Nylon



Bulk	Display	Parts Included	Wt.(lb.)	Std. Pack
n/a	K002030-9	Clamcleat® Jr. (1), 8-32 x 1" OH (2), 8-32 Nyloc Nut (2), #8 Fender Washer (2)	.06	10 kits

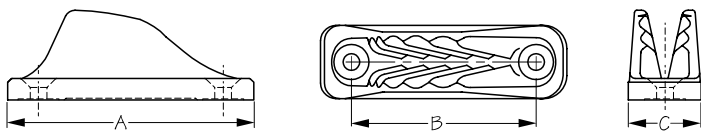


CLAMCLEAT® JR. TRACK KIT

Injection Molded Nylon/304 Stainless Steel



Bulk	Display	Parts Included	Wt.(lb.)	Std. Pack
n/a	K002030T-9	Clamcleat® Jr. (1) 8-32 x 1/2" OH (2) 8-32 Track Fastener (2)	.08	10 kits

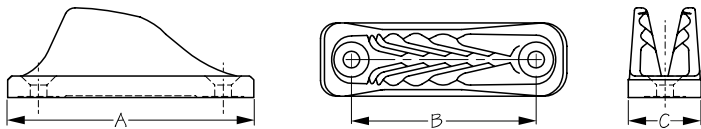


CLAMCLEAT® MINI

Injection Molded Nylon



Bulk	Display	A	B	C	Line Size	Color	Fastener	Wt.(lb.)	Std. Pack
K002040	n/a	2-1/16"	1-7/16"	5/8"	1/8"-1/4"	Black	#8 OH	.02	10 ea

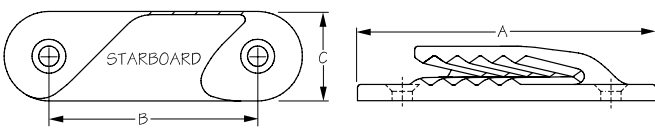


CLAMCLEAT® MIDI

Injection Molded Nylon



Bulk	Display	A	B	C	Line Size	Color	Fastener	Wt.(lb.)	Std. Pack
K002090	n/a	2-7/8"	2-1/8"	3/4"	5/32"-5/16"	Black	#8 OH	.04	10 ea

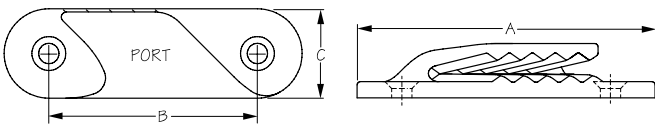


CLAMCLEAT® FINE LINE STARBOARD

Injection Molded Nylon



Bulk	Display	A	B	C	Line Size	Color	Fastener	Wt.(lb.)	Std. Pack
K002130	n/a	2-3/4"	1-15/16"	13/16"	1/16"-3/16"	Black	#8 OH	.02	10 ea



CLAMCLEAT® FINE LINE PORT

Injection Molded Nylon



Bulk	Display	A	B	C	Line Size	Color	Fastener	Wt.(lb.)	Std. Pack
K002140	n/a	2-3/4"	1-15/16"	13/16"	1/16"-3/16"	Black	#8 OH	.02	10 ea



CLAMCLEAT® FINE LINE PORT & STARBOARD KIT

Injection Molded Nylon

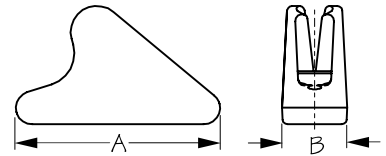


Bulk	Display	Parts Included	Wt.(lb.)	Std. Pack
n/a	K002134-9	Clamcleat® Fine Line Port (1), Clamcleat® Fine Line Starboard (1), 8-32 x 1" OH (4), 8-32 Nyloc Nut (4), #8 Fender Washer (4)	.08	10 kits



CLAMCLEAT® LINE LOCK

Injection Molded Nylon

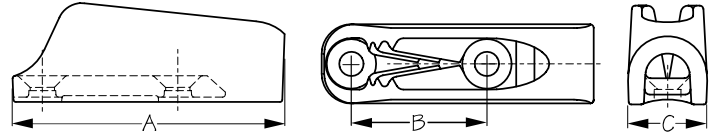


Bulk	Display	A	B	Line Size	Color	Fastener	Wt.(lb.)	Std. Pack
K002600	n/a	13/16"	3/8"	1/16"-3/16"	Black	None	.01	10 ea
K002660	n/a	13/16"	1/4"	3/64"-1/8"	Black	None	.01	10 ea



CLAMCLEAT® MICRO

Injection Molded Nylon

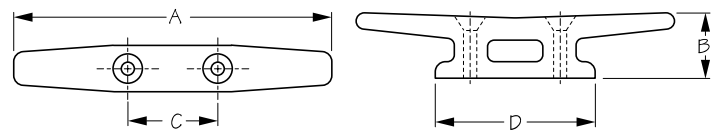


Bulk	Display	A	B	C	Line Size	Color	Fastener	Wt.(lb.)	Std. Pack
K002630	n/a	1-3/4"	15/16"	1/2"	3/64"-5/32"	Black	#6 OH	.02	10 ea



OPEN BASE CLEAT

Injection Molded Nylon



Bulk	Display	Color	A	B	C	D	Fastener	Wt.(lb.)	Std. Pack
K043030	K043030-1	Black	3"	11/16"	1"	1-5/8"	#6 OH	.01	10 ea / 10 pr
K043040	K043040-1	Black	4"	7/8"	1-1/8"	2"	#8 OH	.03	10 ea / 10 pr
K043050	n/a	Black	5"	1-1/16"	1-7/16"	2-1/2"	#10 OH	.06	10 ea



OPEN BASE CLEAT KIT

Injection Molded Nylon

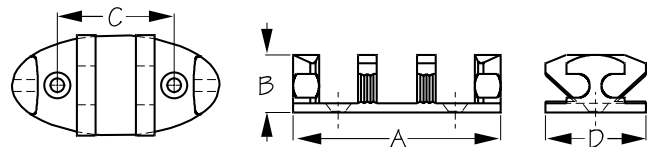


Bulk	Display	Parts Included	Wt.(lb.)	Std. Pack
n/a	K043030-9	3" Open Base Cleat (2), 6-32 x 1" OH (4), 6-32 Nyloc Nut (4), #6 Flat Washer (4)	.06	10 kits
n/a	K043040-9	4" Open Base Cleat (2), 8-32 x 1"-1/4 OH (4), 8-32 Nyloc Nut (4), #8 Fender Washer (4)	.10	10 kits



ZIG ZAG CLEAT

Injection Molded Nylon



Bulk	Display	A	B	C	D	Fastener	Wt.(lb.)	Std. Pack
K043540	K043540-1	3-1/2"	15/16"	1-15/16"	1-3/4"	#10 OH	.08	10 ea



ZIG ZAG CLEAT KIT

Injection Molded Nylon

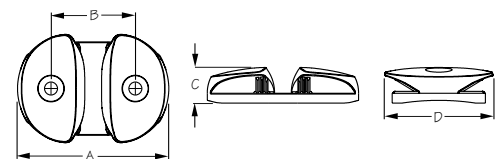


Bulk	Display	Parts Included	Wt.(lb.)	Std. Pack
n/a	K043540-9	Zig-Zag Cleat (1), 10-32 X 3/4" OH (2), 10-32 Nyloc Nut (2), #10 Fender Washer (2)	.10	10 kits



ZIG CLEAT

Injection Molded Nylon

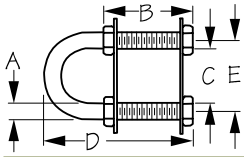


Bulk	Display	A	B	C	D	Fastener	Wt.(lb.)	Std. Pack
K043550	K043550-1	2-3/8"	1-5/16"	1/2"	1-11/16"	#10 OH	.04	10 ea

You've heard of our Zig-Zag Cleat; now be impressed by our new, simplified Zig Cleat! Designed for easy one-handed adjustability, with enough holding power for anchor trolley systems.

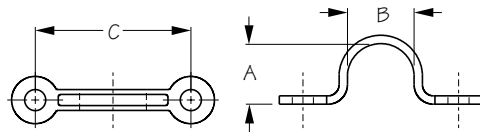
BOW EYE

Machined 304 Stainless Steel



Bulk	Display	Threads	A	B	C	D	E	B.S. (lb.)	Wt.(lb.)	Std. Pack
K080031	K080031-1	3/8" NC	3/8"	1-1/2"	1-1/16"	2-7/8"	1-7/16"	16,000	.22	10 ea

Bow Eyes come with adjustable finished nuts as compared to the crimped ring used on most other bow eyes. The 3/8" shafts have rolled threads. Plate sizes: K080031, 2-1/4" x 3/4".

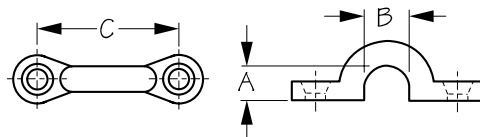


PAD EYE

Stamped 304 Stainless Steel



Bulk	Display	A	B	C	Fastener	Wt.(lb.)	Std. Pack
K081101	n/a	1/2"	7/16"	1-1/8"	#6 PH	.01	10 ea
K081102	n/a	5/8"	9/16"	1-3/8"	#8 PH	.01	10 ea
K081103	n/a	3/4"	3/4"	1-3/4"	#10 PH	.03	10 ea



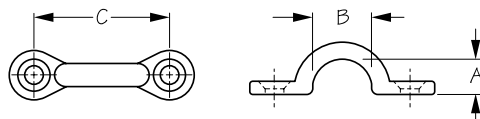
PAD EYE

Forged 304 Stainless Steel



Bulk	Display	A	B	C	Fastener	Wt.(lb.)	Std. Pack
K081200	K081200-1	5/16"	3/8"	1-3/8"	#8 OH	.03	10 ea / 10 pr
K081205	n/a	3/8"	1/2"	1-5/8"	#10 OH	.05	10 ea

Display sets include: two (2) pad eyes.



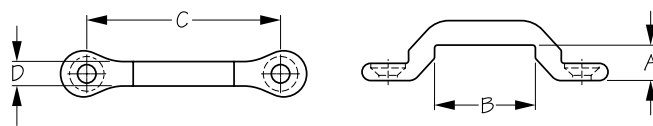
PAD EYE

Die Cast Zinc Chrome Plated



Bulk	Display	A	B	C	Fastener	Wt.(lb.)	Std. Pack
K081242	n/a	3/8"	1/2"	1-3/8"	#8 OH	.02	20 ea

⚠️WARNING: Cancer and Reproductive Harm - www.P65Warnings.ca.gov



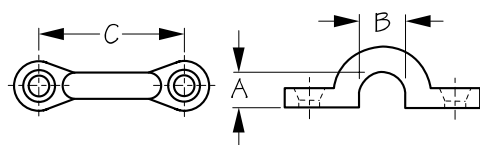
TIE DOWN EYE STRAP

Forged 304 Stainless Steel



Bulk	Display	A	B	C	D	Fastener	Wt.(lb.)	Std. Pack
K081261	K081261-1	3/8"	1-1/16"	2-1/8"	1/4"	#10 OH	.06	10 ea / 10 pr

Tie Down Eye Straps can be used for a variety of hold down applications. Works great as a tie down point for most cam-buckle straps. Display sets include: two (2) eye straps.



PAD EYE

Forged Bronze Wire



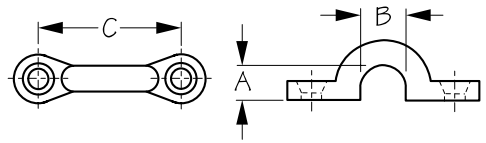
Bulk	Display	Finish	A	B	C	Fastener	Wt.(lb.)	Std. Pack
K081270	n/a	Bronze	5/16"	3/8"	1-3/8"	#8 OH	.04	10 ea

⚠️WARNING: Cancer and Reproductive Harm - www.P65Warnings.ca.gov



PAD EYE

Injection Molded Nylon



Bulk	Display	A	B	C	Fastener	Color	Wt.(lb.)	Std. Pack
K081300	K081300-1	11/32"	11/32"	1-1/16"	#8 OH	Black	.01	100 ea / 10 sets
K081310	K081310-1	3/8"	1/2"	1-3/8"	#8 OH	Black	.01	100 ea / 10 sets

Our best-selling pad eye! Countersunk for flat or oval head screws. Also available with a flat top to accept a pop rivet or pan head screws (K081340/K081350). Display sets include: six (6) pad eyes.



PAD EYE KIT

Injection Molded Nylon

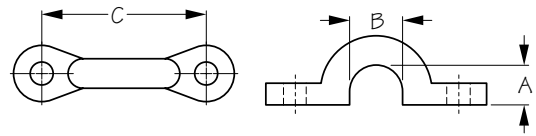


Bulk	Display	Parts Included	Wt.(lb.)	Std. Pack
n/a	K081310-9	3/8" Pad Eye (6), 10-32 x 3/4" OH (12), 10-32 Nyloc Nut (12), #10 Flat Washer (12)	.2	10 kits



POP RIVET MOUNT PAD EYE

Injection Molded Nylon



Bulk	Display	A	B	C	Fastener	Color	Wt.(lb.)	Std. Pack
K081340	K081340-1	11/32"	11/32"	1-1/16"	3/16" Pop Rivet	Black	.01	100 ea / 10 sets
K081350	K081350-1	3/8"	1/2"	1-3/8"	3/16" Pop Rivet	Black	.01	100 ea / 10 sets

The fastener pads are flat topped to accept a 3/16" pop rivet (K799555BK) or pan head screw. Also available with a countersunk top to accept flat or oval head screws (K081300/K081310). Display sets include: six (6) pad eyes.



POP RIVET MOUNT PAD EYE KIT

Injection Molded Nylon

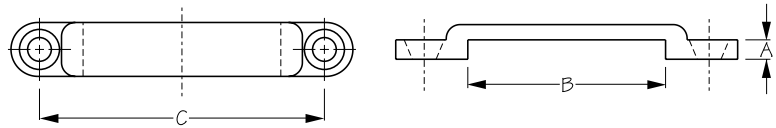


Bulk	Display	Parts Included	Wt.(lb.)	Std. Pack
n/a	K081350-9	3/8" Pop Rivet Mount Pad Eye (6), Tri-Fold Pop Rivets (12)	.2	10 kits



FOOTMANS LOOP

Injection Molded Nylon



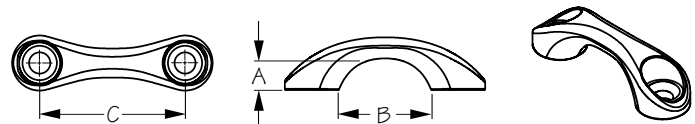
Bulk	Display	A	B	C	Fastener	Wt.(lb.)	Std. Pack
K081380	K081380-1	3/16"	1"	2"	#10 OH	.01	10 ea / 10 sets

Tie Down Eye Straps can be used for a variety of hold down applications. Works great as a tie down point for most cam-buckle straps. Display sets include: six (6) footmans loops.



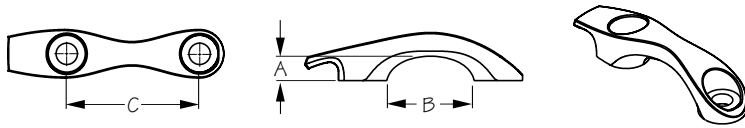
STREAMLINER PAD EYE

Injection Molded Nylon



Bulk	Display	A	B	C	Fastener	Color	Wt.(lb.)	Std. Pack
K081410	K081410-1	1/4"	7/8"	1-3/8"	3/16" Pop Rivet	Black	.01	100 ea / 10 sets

Display sets include: six (6) pad eyes.



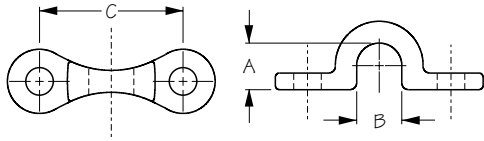
PAD HOOK

Injection Molded Nylon



Bulk	Display	A	B	C	Fastener	Color	Wt.(lb.)	Std. Pack
K081450	K081450-1	1/4"	7/8"	1-3/8"	3/16" Pop Rivet	Black	.01	100 ea / 10 sets

Display sets include: six (6) pad hooks.



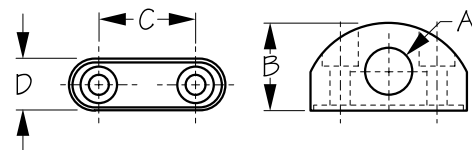
POP RIVET MOUNT PAD EYE

Investment Cast 316 Stainless Steel



Bulk	Display	A	B	C	Fastener	Wt.(lb.)	Std. Pack
K081850	K081850-1	11/32"	11/32"	1-1/16"	3/16" Pop Rivet	.02	10 ea / 10 pr

The fastener pads are flat topped to accept a 3/16" pop rivets (K799555BK) or pan head screws. Display sets include: two (2) pad eyes.

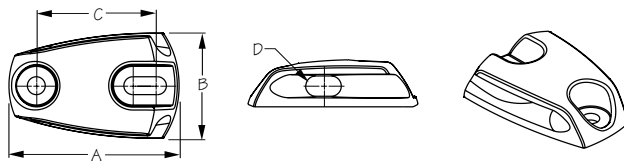


FAIRLEAD

Injection Molded Nylon



Bulk	Display	Color	A	B	C	D	Fastener	Wt.(lb.)	Std. Pack
K082010	n/a	Black	3/8"	3/4"	7/8"	7/16"	#8 PH	.01	10 ea
K082051	n/a	Black	9/16"	1-1/8"	1"	11/16"	#8 PH	.03	10 ea
K082016	n/a	Black	5/8"	1-1/4"	1-3/8"	13/16"	#8 PH	.06	10 ea



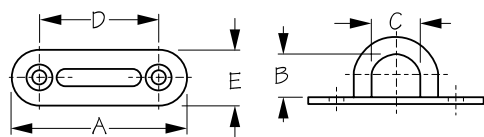
CHEEK BLOCK

Injection Molded Nylon



Bulk	Display	A	B	C	D	Wt.(lb.)	Std. Pack
K082200	K082200-1	2-1/16"	1-3/8"	1-1/4"	1/4"	.04	10 ea / 10 pr

This durable, one-piece guide is just the tool for quiet and smooth anchor trolley operations, and is highlighted by a low-profile design with no hard edges to catch your fishing line. Display sets include: two (2) cheek blocks.

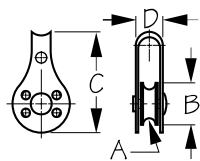


OBLONG EYE PLATE

Stamped 304 Stainless Steel



Bulk	Display	A	B	C	D	E	Fastener	Wt.(lb.)	Std. Pack
K089701	n/a	2-1/8"	1/2"	5/8"	1-1/2"	5/8"	#10 OH	.03	10 ea
K089702	n/a	2-9/16"	5/8"	3/4"	1-13/16"	3/4"	#10 OH	.07	10 ea
K089703	n/a	3-3/16"	13/16"	7/8"	2-3/16"	15/16"	#10 OH	.14	10 ea



PULLEY

Stainless Steel W/Plastic Sheave

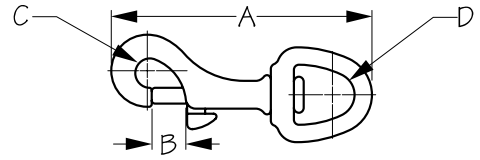


Bulk	Display	A (Wire Dia.)	B	C	D	Sheave	Wt.(lb.)	Std. Pack
K092100	K092100-1	1/4"	1"	1-13/16"	1/2"	Plastic	.04	10 ea



SWIVEL EYE BOLT SNAP

Sand Cast Brass



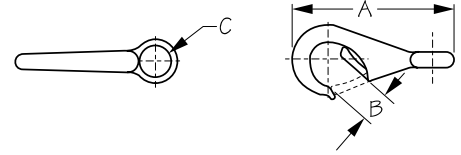
Bulk	Display	A	B	C	D	Wt.(lb.)	Std. Pack
K139016	K139016-1	3-5/16"	7/16"	3/8"	5/8"	.12	10 ea

▲WARNING: Cancer and Reproductive Harm - www.P65Warnings.ca.gov



FAST EYE BOAT SNAP

Sand Cast Brass



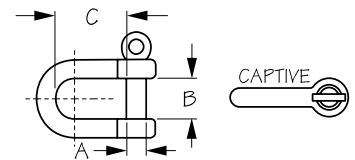
Bulk	Display	Size	A	B	C	Wt.(lb.)	Std. Pack
K139120	n/a	0	2-1/8"	1/4"	7/16"	.07	10 ea
K139121	n/a	1	2-7/8"	5/16"	5/8"	.11	10 ea

▲WARNING: Cancer and Reproductive Harm - www.P65Warnings.ca.gov



CAPTIVE PIN D-SHACKLE

Forged 316 Stainless Steel



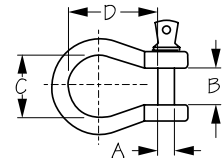
Bulk	Display	A	B	C	B.S. (lb.)	Wt.(lb.)	Std. Pack
K147123	n/a	5/32"	3/8"	11/16"	1,540	.02	10 ea
K147124	n/a	3/16"	7/16"	11/16"	2,200	.03	10 ea

When opening a Sea-Lect Designs Captive Pin D-Shackle, the pin completely clears the opening of the shackle and is recessed into a secured flush position, the pin remains captive and will not fall out. With other shackles, the pin is not flush until you partially unscrew it.



SCREW-PIN ANCHOR BOW SHACKLE

Drop Forged Steel Hot Dipped Galvanized



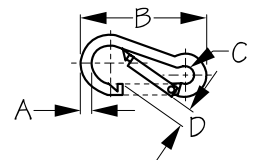
Bulk	Display	Size	A	B	C	D	Wt.(lb.)	Std. Pack
K147804	n/a	3/16"	1/4"	3/8"	9/16"	13/16"	.04	10 ea
K147806	n/a	1/4"	5/16"	7/16"	3/4"	1-1/16"	.07	10 ea

▲WARNING: Cancer and Reproductive Harm - www.P65Warnings.ca.gov



SNAP HOOK

Formed 316 Stainless Steel

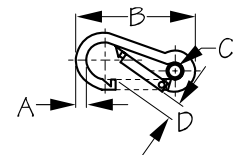


Bulk	Display	A	B	C	D	B.S. (lb.)	Wt.(lb.)	Std. Pack
K151560	K151560-1	1/4"	2-3/8"	5/16"	5/16"	700	.08	10 ea
K151580	K151580-1	5/16"	3-1/8"	7/16"	3/8"	1,400	.14	10 ea

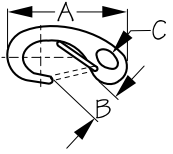


SNAP HOOK W/ EYE INSERT

Formed 316 Stainless Steel



Bulk	Display	A	B	C	D	B.S. (lb.)	Wt.(lb.)	Std. Pack
K151565	K151565-1	1/4"	2-3/8"	1/4"	5/16"	700	.08	10 ea
K151585	K151585-1	5/16"	3-1/8"	3/8"	3/8"	1,400	.15	10 ea

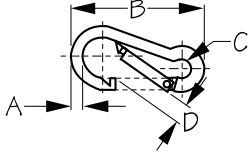


SPRING GATE SNAP HOOK

Investment Cast 316 Stainless Steel



Bulk	Display	A	B	C	Wt.(lb.)	Std. Pack
K154250	K154250-1	2"	7/16"	1/4"	.04	10 ea
K154270	K154270-1	2-3/4"	7/16"	3/8"	.11	10 ea



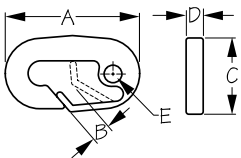
SNAP HOOK

Electro-Galvanized Formed Mild Steel



Bulk	Display	A	B	C	D	B.S. (lb.)	Wt.(lb.)	Std. Pack
K156060	n/a	1/4"	2-3/8"	5/16"	5/16"	560	.06	10 ea
K156080	n/a	5/16"	3-3/16"	7/16"	7/16"	1,140	.14	10 ea

⚠WARNING: Cancer and Reproductive Harm - www.P65Warnings.ca.gov

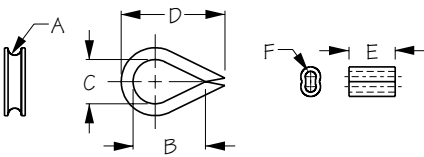


SKI ROPE SNAP

Injection Molded Nylon



Bulk	Display	A	B	C	D	E	Wt.(lb.)	Std. Pack
K157110	K157110-1	3-1/4"	5/8"	1-13/16"	7/16"	7/16"	.05	10 ea



THIMBLE W/ SWEDGE

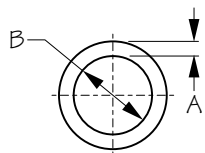
Stamped 304 Stainless Steel/Chrome Plated Brass



Bulk	Display	A (Wire Dia.)	B	C	D	E	F	Wt.(lb.)	Std. Pack
n/a	K171103-1	1/16"	11/16"	3/8"	7/8"	3/8"	1/16"	.03	10 pr
K171103	n/a	Thimble Only						.01	100 ea
KOP74802	n/a	Swedge Only						.01	100 ea

K171103-1 includes two Thimbles and two Swedges each (pictured). K171103 and KOP74802 are packed 100 per bag.

⚠WARNING: Cancer and Reproductive Harm - www.P65Warnings.ca.gov

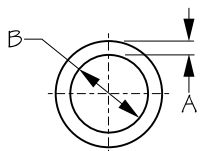


ROUND RING

Injection Molded Nylon



Bulk	Display	A	B	Wt.(lb.)	Std. Pack
K190580	K190580-1	3/8"	2"	.03	10 ea



ROUND RING

Formed 304 Stainless Steel

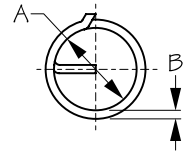


Bulk	Display	A	B	B.S. (lb.)	WLL (lb.)	Wt.(lb.)	Std. Pack
K191415	n/a	1/4"	1-1/2"	2,700	675	.08	10 ea
K191520	K191520-1	5/16"	2"	5,000	1,250	.16	10 ea



SPLIT RING

Formed 316 Stainless Steel

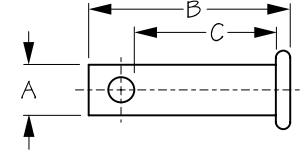


Bulk	Display	A	B	Wt.(lb.)	Std. Pack
K193562	n/a	15/32"	1/16"	.01	10 ea
K193563	n/a	5/8"	1/16"	.01	10 ea



CLEVIS PIN

Formed 316 Stainless Steel

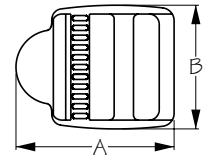


Bulk	Display	A	B	C	Wt.(lb.)	Std. Pack
K193605	n/a	3/16" - 5 mm	3/4"	9/16"	.01	10 ea



WEBBING LADDER LOCK

Injection Molded Nylon

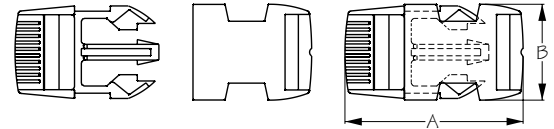


Bulk	Display	A	B	Webbing Width	Wt.(lb.)	Std. Pack
K199131	n/a	1-1/2"	1-1/8"	1"	.01	10 ea



WEBBING BUCKLE

Injection Molded Nylon

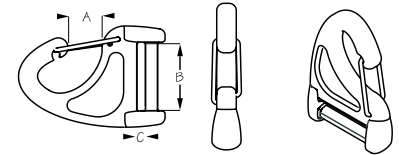


Bulk	Display	A	B	Webbing Width	Wt.(lb.)	Std. Pack
K199141	n/a	2-1/2"	1-1/4"	1"	.03	10 ea



WEBBING SNAP

Injection Molded Nylon / Stainless Steel



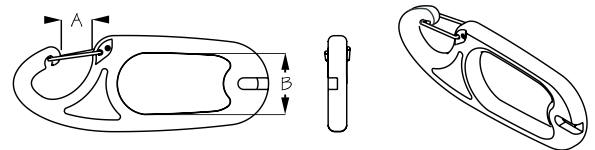
Bulk	Display	Webbing Width	A	B	C	Wt.(lb.)	Std. Pack
K199200	K199200-1	1"	1/2"	1-1/32"	1/8"	.03	10 ea

Versatile and strong, the Webbing Snap is a great option for seats which use 1" webbing to attach to a lashing point on the boat (or anywhere else for that matter).



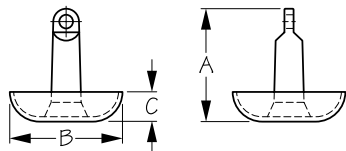
RING CLIP

Injection Molded Nylon / Stainless Steel



Bulk	Display	A	B	Wt.(lb.)	Std. Pack
K199250	K199250-1	1/2"	1"	.04	10 ea

Versatility is the name of the game for this Ring Clip! Includes a recessed slot which encompasses the line knot, and a ring opening large enough for anchor line and stake-out poles alike. Plus, when used in an anchor trolley, you can now easily unclip our custom-designed ring and use the system as a leash when the need arises to wade through the water!



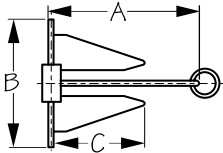
MUSHROOM ANCHOR

Cast Iron



Bulk	Display	Coating/ Paint	Size	A	B	C	Wt.(lb.)	Std. Pack
K314168	n/a	Black Vinyl	8	7-1/2"	6-11/16"	1-3/4"	7.8	1 ea

▲WARNING: Cancer and Reproductive Harm - www.P65Warnings.ca.gov



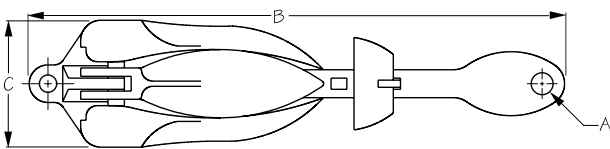
SEA-HOOK® ECONOMY SLIP RING ANCHOR

Hot Dipped Galvanized Stamped Steel



Bulk	Display	A	B	C	Wt.(lb.)	Std. Pack
K317705	n/a	14"	12"	9"	4.0	1 ea

▲WARNING: Cancer and Reproductive Harm - www.P65Warnings.ca.gov



FOLDING ANCHOR

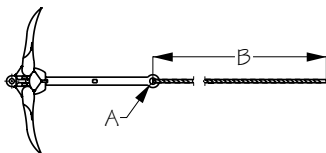
Hot Dipped Galvanized Iron/Forged Flukes



Bulk	Display	A	B	C	Boat Length	Recomm. Line / Length	Recomm. Chain / Length	Wt.(lb.)	Std. Pack
K318001	n/a	1/4"	7"	2-1/4"	5' - 10'	1/4" / 35'	3/16" / 7'-10'	1.5	1 ea
K318003	n/a	1/2"	12"	2-7/8"	5' - 12'	1/4" / 35'	3/16" / 7'-10'	3.5	1 ea
K318005	n/a	1/2"	14"	4"	5' - 14'	5/16" / 50'	3/16" / 7'-10'	5.5	1 ea

Inexpensive and easy to store, the Folding Anchor makes an ideal back-up anchor on larger boats, or can be used as a primary anchor on smaller boats, sailboats, and inflatable boats.

▲WARNING: Cancer and Reproductive Harm - www.P65Warnings.ca.gov



FOLDING ANCHOR KIT - ECONOMY

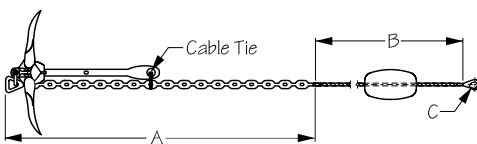
Hot Dipped Galvanized Iron/Forged Flukes



Bulk	Display	A	B	Boat Length	Line / Length	Wt.(lb.)	Std. Pack
n/a	K318003K1-1	1/2"	20'	5' - 12'	3/16" / 20'	3.5	1 ea

The Folding Anchor Kit (Economy) includes everything you need to get started. It comes with our popular 3.5 lb. Folding Anchor (K318003) with 20' of 3/16" line and a handy mesh bag.

▲WARNING: Cancer and Reproductive Harm - www.P65Warnings.ca.gov



PREMIUM ANTI-SLAG ANCHOR SYSTEM KIT

Hot Dipped Galvanized Iron/Forged Flukes



Bulk	Display	A	B	C	Anchor Chain Length	Line/Length	Boat Length	Wt.(lb.)	Std. Pack
n/a	K318003KP-9	3'	35'	1"	3'	3/8"/35'	5'-14'	5.00	1 kit

The Premium Anti Slag Anchor System will help in retrieving a hopelessly stuck anchor from the most stubborn of river, lake, or ocean bottoms. Parts included: 3 lbs. folding anchor (1), 3' of 3/16" PVC coated anchor chain (1), 3/16" anchor shackle (1), fast eye boat snap (1), red anchor float (1), 35' of 3/8" polypro anchor line (1), cable ties (10), and carrying bag (1).

▲WARNING: Cancer and Reproductive Harm - www.P65Warnings.ca.gov



ANCHOR TROLLEY KIT

Injection Molded Nylon/Stainless Steel/Polyester



Bulk	Display	Parts Included	Wt.(lb.)	Std. Pack
n/a	K318100-9	3/16" Poly Pro Deck Line - 30' (1), Zig-Zag Cleat (1), 2" Nylon Ring (1), Stainless Pad Eyes (2), Stainless Snap Hook (2), Stainless Pulley (2), 10-32 X 3/4" PH (6), 10-32 Nyloc Nut (6), #10 Flat Washer (6), Tri-Fold Pop Rivets (6)	.80	5 kits

The Anchor Trolley Kit allows for easy one handed use allowing you to orient your boat in current or wind without having to move your anchor. Comes with all the fasteners and hardware to install yourself.



PERFORMANCE ANCHOR TROLLEY KIT

Injection Molded Nylon/Stainless Steel/Polyester



Bulk	Display	Parts Included	Wt.(lb.)	Std. Pack
n/a	K318110-9	3/16" Poly Pro Deck Line - 30' (1), Zig Cleat (1), Ring Clip (1), Cheek Block (2), Nylon Pad Eye (2), 10-32 X 3/4" PH (10), 10-32 Nyloc Nut (10), #10 Flat Washer (10), Well Nuts (10)	.80	5 kits

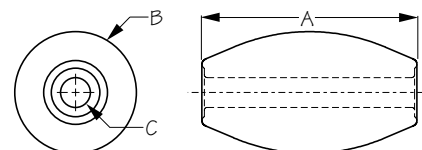
Our Performance Anchor Trolley Kit is designed as an essential tool for the Pro Angler. Featuring our new Zig Cleat for easy one-handed adjustability, and durable one-piece Cheek Blocks for silent operations so you won't scare fish in the water below. When the need arises to wade through the water, easily unclip our unique ring clip and use the system as a leash.

⚠WARNING: Cancer and Reproductive Harm - www.P65Warnings.ca.gov



ANCHOR FLOAT

High Density Closed Cell Foam/Plastic Spindle Insert



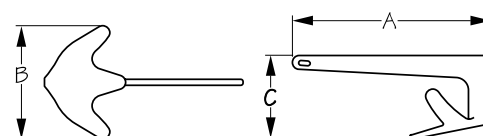
Bulk	Display	A	B	C	Wt.(lb.)	Std. Pack
n/a	K318200-1	5-1/2"	3-1/2"	5/8"	.20	10 ea

⚠WARNING: Cancer and Reproductive Harm - www.P65Warnings.ca.gov



SEA-HOOK® CLAW ANCHOR

Hot Dipped Galvanized Investment Cast Steel



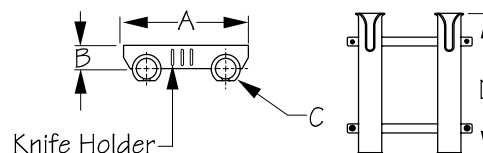
Bulk	Display	A	B	C	Recomm. Boat Length	Wt.(lb.)	Std. Pack
K318501	n/a	11-3/16"	7-3/8"	5-1/4"	up to 12'	2.2	1 ea

⚠WARNING: Cancer and Reproductive Harm - www.P65Warnings.ca.gov



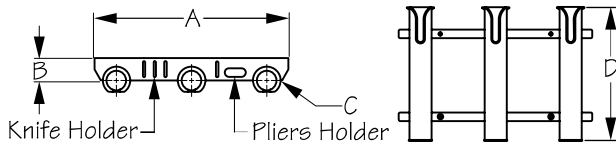
TWO POLE CRATE MOUNT ROD HOLDER

Injection Molded Polypropylene



Bulk	Display	A	B	C	D	Color	Tool Holder	Wt.(lb.)	Std. Pack
K325029	K325029-9	9"	1-7/8"	1-3/4"	10-3/4"	Black	Yes	.70	5 ea / 5 kits

One-piece injection molded UV stabilized polypropylene Two Pole Crate Mount Rod Holder. No assembly required, easy installation. Built-in knife and lure holder. Accommodates rods up to 1-3/4" in diameter. Display includes four #8 stainless steel mounting screws.



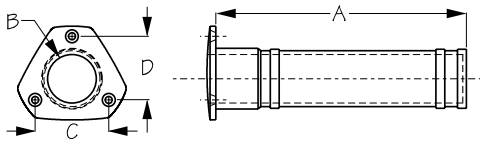
THREE POLE DECK MOUNT ROD HOLDER

Injection Molded Polypropylene



Bulk	Display	A	B	C	D	Color	Tool Holder	Wt.(lb.)	Std. Pack
K325039	K325039-9	13-1/2"	1-7/8"	1-3/4"	10-3/4"	Black	Yes	.90	5 ea / 5 kits

One-piece injection molded UV stabilized polypropylene Three Pole Deck Mount Rod Holder. No assembly required, easy installation. Built-in knife, pliers, and lure holder. Accommodates rods up to 1-3/4" in diameter. Display includes four #8 stainless steel mounting screws.



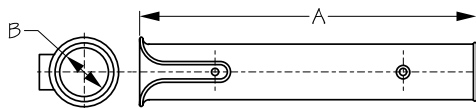
90° FLUSH MOUNT ROD HOLDER W/ CLOSED END

Injection Molded ABS



Bulk	Display	A	B	C	D	Color	Fastener	Wt.(lb.)	Std. Pack
K325112	n/a	8-1/2"	1-5/8"	2-13/16"	2-5/8"	Black	#10 OH	.42	40 ea

Closed end is great for use in kayaks! Uses K325110FG gasket.



SIDE MOUNT ROD HOLDER

Injection Molded Polypropylene



Bulk	Display	A	B	Style	Color	Fastener	Wt.(lb.)	Std. Pack
K325120	n/a	11-11/16"	1-3/4"	Flat Back	Black	#10 OH	.22	50 ea

A molded-in standoff is located on the back of the rod holder allowing direct mounting to any flat surface.

⚠️WARNING: Cancer and Reproductive Harm - www.P65Warnings.ca.gov

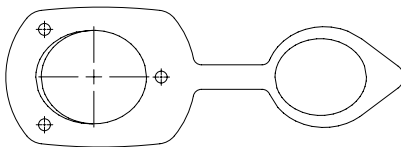


SIDE MOUNT ROD HOLDER KIT

Injection Molded Polypropylene



Bulk	Display	Parts Included	Color	Wt.(lb.)	Std. Pack
n/a	K325120-9	Side Mount Rod Holder - Black (1), 10-32 x 1-1/4" PH (2), 10-32 Nyloc Nut (2), #10 Flat Washer (2)	Black	.25	8 kits



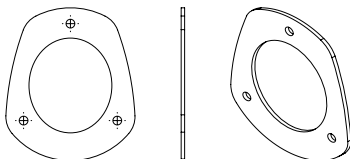
ROD HOLDER CAP & GASKET

Injection Molded PVC



Bulk	Display	Description	Wt.(lb.)	Std. Pack
K325160CAP	K325160CAP-1	Injection Molded Rod Holder Cap & Gasket for K32516X Series	.10	10 ea

⚠️WARNING: Cancer and Reproductive Harm - www.P65Warnings.ca.gov



ROD HOLDER GASKET

Injection Molded PVC/Foam



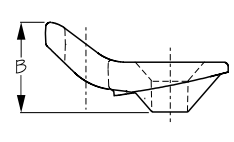
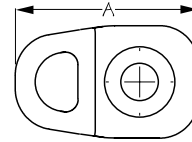
Bulk	Display	Description	Wt.(lb.)	Std. Pack
K325160G	n/a	Injection Molded Rod Holder Gasket for K32516X Series	.01	10 ea
K325160FG	n/a	Foam Rod Holder Gasket for K32516X Series	.01	10 ea
K325110FG	n/a	Foam Rod Holder Gasket for K32511X Series Rod Holder	.01	10 ea

⚠️WARNING: Cancer and Reproductive Harm - www.P65Warnings.ca.gov



ROD HOLDER FITTING - SINGLE LOOP

Injection Molded Nylon



Bulk	Display	A	B	Fastener	Wt.(lb.)	Std. Pack
K325160F	n/a	1-1/4"	1/2"	#10 OH	.01	100 ea

Fits K325162, K325163, K325166, K325167, K325112, and K325113.



ROD HOLDER FITTING - SINGLE LOOP KIT

Injection Molded Nylon



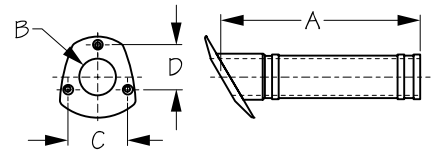
Bulk	Display	Parts Included	Wt.(lb.)	Std. Pack
n/a	K325160F-9	Rod Holder Fitting - Single Loop (2), 10-32 X 1" OH (2), 10-32 Nyloc Nut (2), #10 Flat Washer (2), #10 Well Nut (2)	.08	10 kits

⚠WARNING: Cancer and Reproductive Harm - www.P65Warnings.ca.gov



30° FLUSH MOUNT ROD HOLDER W/ CLOSED END

Injection Molded ABS



Bulk	Display	A	B	C	D	Color	Fastener	Wt.(lb.)	Std. Pack
K325162	K325162-1	9-3/16"	1-5/8"	2-1/2"	2-5/8"	Black	#10 OH	.42	60 ea / 8 ea

Closed end is great for use in kayaks! Uses K325160FG or K325160G gaskets, or K325160CAP cap.



FLUSH MOUNT ROD HOLDER W/ CLOSED END KIT

Injection Molded ABS



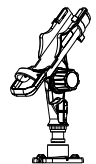
Bulk	Display	Parts Included	Wt.(lb.)	Std. Pack
n/a	K325162-9	Flush Mount Rod Holder (1), Cap and Gasket (1), Rod Holder Leash Fitting (1), 10-32 X 1-1/4" OH (3), 10-32 Nyloc Nut (3), #10 Flat Washer (3), #10 Well Nut (3)	.50	8 kits

⚠WARNING: Cancer and Reproductive Harm - www.P65Warnings.ca.gov



TRIPLE THREAT ROD HOLDER - SURFACE MOUNT

Injection Molded Polypropylene Fiberglass/Nylon



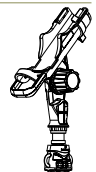
Bulk	Display	Base	Wt.(lb.)	Std. Pack
n/a	K325412-1	Surface Mount	1.08	5 ea

The Triple Threat Rod Holder was designed to be your one stop for all your reel styles, whether you fish spin, bait cast, or fly reel this rod holder can accommodate them all! The quarter turn knob allows easy adjusting of the angle of the rod with a quick twist. The rear bail allows for vertical rod storage while moving from one location to another. Leash attachment points on the base give you a solid clip point for leashing your rod and reel while paddling in rough conditions.



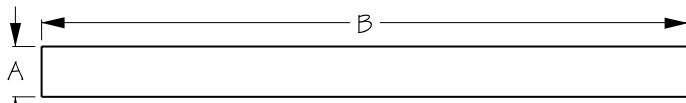
TRIPLE THREAT ROD HOLDER - TRACK MOUNT

Injection Molded Polypropylene Fiberglass/Nylon



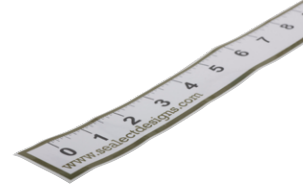
Bulk	Display	Base	Wt.(lb.)	Std. Pack
n/a	K325416-1	Track Mount	1.07	5 ea

The next evolution of our successful Triple Threat Rod Holder is here ... now with a quick-and-easy track attachment! Designed to hold a variety of rod/reel combos, the quarter turn knob allows easy adjusting on the water, and a variety of leash attachment points means your precious cargo can be secure!

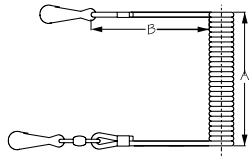


FISHING RULER STICKER

Vinyl



Bulk	Display	A	B	Wt.(lb.)	Std. Pack
n/a	K325900-1	1.5"	24"	.05	10 ea



UTILITY LEASH

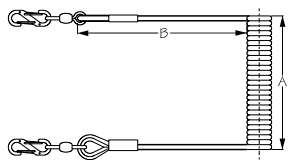
Delrin/304 Stainless Steel



Bulk	Display	A	B	Wt.(lb.)	Std. Pack
n/a	K326910-1	48" (4')	3-1/2"	.10	10 ea

Our Utility Leash is intended for use with any items that you use regularly and don't want to lose to the watery deep. Clip to your rod, PFD, boat, or tackle box for easy access. "A" Dimension references the coil length when fully stretched.

⚠WARNING: Cancer and Reproductive Harm - www.P65Warnings.ca.gov



PREMIUM LEASH

Delrin/304 Stainless Steel



Bulk	Display	A	B	Wt.(lb.)	Std. Pack
n/a	K326915-1	48" (4')	3-1/2"	.11	10 ea

Our Premium Leash features Nite Ize® clips, stainless steel thimbles, and heat shrink swedge covers for a clean and tough leash for all your most used tools. Clip to your rod, PFD, boat or tackle box for ease of access. "A" Dimension references the coil length when fully stretched.

⚠WARNING: Cancer and Reproductive Harm - www.P65Warnings.ca.gov



SECURE TIES FOR LEASHES

Nylon



Bulk	Display	Parts Included	Wt.(lb.)	Std. Pack
n/a	K326919-1	Extra Secure Ties, 6 Pack (Includes 3 Large + 3 Small Ties)	.07	10 ea

Extra security ties, in a pack of 6 (3 large + 3 small) for leash kits.



UTILITY LEASH & DECK MOUNT FITTING KIT

Injection Molded Nylon/Delrin/304 Stainless Steel



Bulk	Display	Parts Included	Wt.(lb.)	Std. Pack
n/a	K326920-9	Utility Leash (1), Kayak Deck Fitting (1), Security Ties (6), Fastener Pack (1)	.22	10 kits

Comes with deck mount fitting to attach the leash to your deck, and six security ties to attach to your leash to your rod, tools, or electronic devices. Fastener pack includes: four (4) nyloc nuts, four (4) flathead washers, four (4) FH fasteners, four (4) well nuts. Extra security ties (K326919-1) are also available in a pack of 6 (3 large + 3 small).

⚠WARNING: Cancer and Reproductive Harm - www.P65Warnings.ca.gov



PREMIUM LEASH & DECK MOUNT FITTING KIT

Injection Molded Nylon/Delrin/304 Stainless Steel



Bulk	Display	Parts Included	Wt.(lb.)	Std. Pack
n/a	K326925-9	Premium Leash (1), Kayak Deck Fitting (1), Security Ties (6), Fastener Pack (1)	.23	10 kits

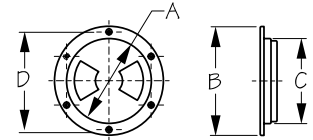
Comes with deck mount fitting to attach the leash to your deck with stainless steel thimbles, and six security ties that you can attach to your rod, tools, or electronic devices. Fastener pack includes: four (4) nyloc nuts, four (4) flathead washers, four (4) FH fasteners, four (4) well nuts. Extra security ties (K326919-1) are also available in a pack of 6 (3 large + 3 small).

⚠WARNING: Cancer and Reproductive Harm - www.P65Warnings.ca.gov



QUARTER-TURN DECK PLATE W/ INTERNAL COLLAR

Injection Molded ABS/Polycarbonate



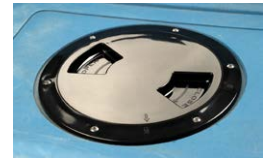
Bulk	Display	A	B	C	D	Color	Lid Texture	Fastener	Wt.(lb.)	Std. Pack
K336345	K336345-1	4-1/2"	6-1/8"	4-1/2"	5-3/8"	Black	Smooth	#8 FH	.28	10 ea
K336355	K336355-1	5-1/2"	6-3/4"	5-3/8"	6-1/8"	Black	Smooth	#8 FH	.32	10 ea
K336357	K336357-1	5-1/2"	6-3/4"	5-3/8"	6-1/8"	Black	Textured	#8 FH	.33	10 ea
K336365	K336365-1	6-1/2"	8-1/8"	6-1/2"	7-3/8"	Black	Smooth	#8 FH	.41	10 ea
K336367	K336367-1	6-1/2"	8-1/8"	6-1/2"	7-3/8"	Black	Textured	#8 FH	.42	10 ea
K336385	K336385-1	8-5/16"	9-7/8"	8-1/4"	8-15/16"	Black	Smooth	#8 FH	.55	10 ea
K336387	K336387-1	8-5/16"	9-7/8"	8-1/4"	8-15/16"	Black	Textured	#8 FH	.56	10 ea

The Sea-Lect Designs Quarter Turn Deck Plate w/ Internal Collar is molded with a collar on the bottom to hold deck plate bags or other round containers. When installing, use silicone sealant on hull or deck surface. Lubricate with Teflon grease, Vaseline or 303 aerospace protectant and clean with hot, soapy water. Avoid contact with acetone or strong solvents.



QUARTER-TURN DECK PLATE W/ INTERNAL COLLAR KIT

Injection Molded ABS/Polycarbonate

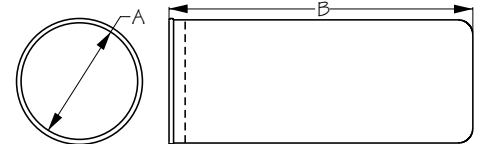


Bulk	Display	Parts Included	Wt.(lb.)	Std. Pack
n/a	K336345-9	4" Quarter-Turn Deck Plate w/ Internal Collar (1), 8-32 x 3/4" PH (6), 8-32 Nyloc Nut (6), #8 Flat Washer (6)	.50	10 kits
n/a	K336355-9	5" Quarter-Turn Deck Plate w/ Internal Collar (1), 8-32 x 3/4" PH (6), 8-32 Nyloc Nut (6), #8 Flat Washer (6)	.54	10 kits
n/a	K336365-9	6" Quarter-Turn Deck Plate w/ Internal Collar (1), 8-32 x 3/4" PH (6), 8-32 Nyloc Nut (6), #8 Flat Washer (6)	.63	10 kits
n/a	K336385-9	8" Quarter-Turn Deck Plate w/ Internal Collar (1), 8-32 x 3/4" PH (6), 8-32 Nyloc Nut (6), #8 Flat Washer (6)	.77	10 kits



DECK PLATE BAG

Nylon/Stainless Steel



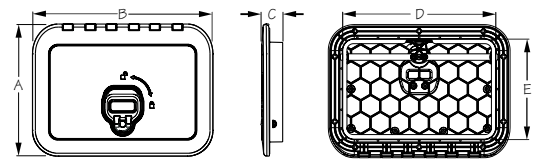
Bulk	Display	A	B	Wt.(lb.)	Std. Pack
K337149R	K337149R-1	4"	10"	.12	10 ea
K337159R	K337159R-1	5"	10"	.14	10 ea
K337169R	K337169R-1	6"	10"	.16	10 ea
K337189R	K337189R-1	8"	12"	.18	10 ea

Designed for use with our Deck Plates w/ Internal Collar; 4" fits K33634X series, 5" fits K33635X series, 6" fits K33636X, and 8" fits K33638X series. A drawstring bag closure keeps items inside the bag when removed from the deck plate.



TRIPLE LATCH HATCH

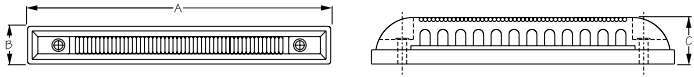
Nylon/Stainless Steel



Bulk	Display	A	B	C	D	E	Color	Fastener	Wt.(lb.)	Std. Pack
K336525	K336525-3	10-1/4"	14"	1-11/16"	11-13/16"	7-3/4"	Black	#10 FH	2.00	1 ea

This Triple Latch Hatch features 3 locking points which when engaged cause the camming surface to pull the lid into the gasket creating a water tight seal. Constructed of injection molded polypropylene with a structural honeycomb lid for superior rigidity and strength. Non-slip textured surface. Can be mounted horizontally or vertically. Full length piano hinge for added strength and security. Installs with ten #10 FH fasteners (not included).

⚠WARNING: Cancer and Reproductive Harm - www.P65Warnings.ca.gov



LED STRIP LIGHT

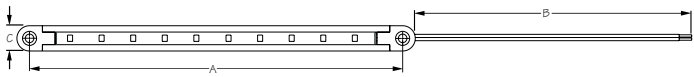
Plastic



Bulk	Display	A	B	C	LEDs	Volts	Color	Fastener	Wt.(lb.)	Std. Pack
n/a	K401445-1	3-15/16"	3/4"	15/16"	6	12/24	White	#10 RH	.10	10 ea
n/a	K401446-1	3-15/16"	3/4"	15/16"	6	12/24	Blue	#10 RH	.10	10 ea
n/a	K401447-1	3-15/16"	3/4"	15/16"	6	12/24	Green	#10 RH	.10	10 ea
n/a	K401448-1	3-15/16"	3/4"	15/16"	6	12/24	Red	#10 RH	.10	10 ea

These LED Strip Lights feature 6 low amp LEDs per light. Circuit boards are epoxy potted for a waterproof seal. Constructed of corrosion resistant lightweight plastic. Installs with two #10 RH fasteners (included). 12/24VDC. IP67 waterproof rating. Display sets include: two (2) LED lights.

WARNING: Cancer and Reproductive Harm - www.P65Warnings.ca.gov



LED UTILITY LIGHT FLEX STRIP KIT

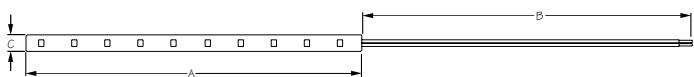
Plastic



Bulk	Display	A	B	C	Volts	Color	Wt.(lb.)	Std. Pack
n/a	K401475-1	7-1/4"	12"	1/2"	12	White	.06	10 ea
n/a	K401477-1	7-1/4"	12"	1/2"	12	Green	.06	10 ea
n/a	K401478-1	7-1/4"	12"	1/2"	12	Red	.06	10 ea
n/a	K401479-1	7-1/4"	12"	1/2"	12	Red/Green	.06	10 ea

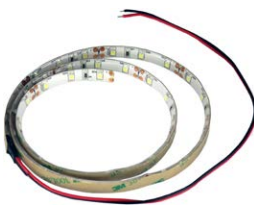
Display sets include: two (2) LED lights. 22-gauge wire. Maximum: 12V, 1.3A. Fasteners included.

WARNING: Cancer and Reproductive Harm - www.P65Warnings.ca.gov



LED UTILITY LIGHT FLEX STRIP ROLL

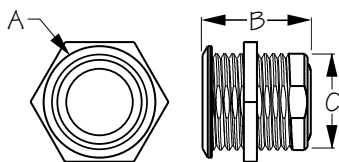
Plastic



Bulk	Display	A	B	C	Volts	Color	Wt.(lb.)	Std. Pack
n/a	K401485-1	26.9"	12"	5/16"	12	White	.06	10 ea
n/a	K401487-1	26.9"	12"	5/16"	12	Green	.06	10 ea
n/a	K401488-1	26.9"	12"	5/16"	12	Red	.06	10 ea

Display sets include: one (1) LED light strip roll. 22-gauge wire. Maximum: 12V, 1.3A.

WARNING: Cancer and Reproductive Harm - www.P65Warnings.ca.gov



LED STAINLESS PUSH BUTTON ON/OFF SWITCH

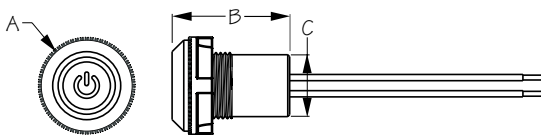
Formed 304 Stainless Steel



Bulk	Display	A	B	C	Max Amps	Volts	Wt.(lb.)	Std. Pack
n/a	K403063-1	7/8"	7/8"	3/4"	5	10-24	.25	10 ea

LED Push Button On/Off Switch is prewired for easy installation. Typically wired so LED ring lights up blue when pushing the center button, energizing the circuit. Constructed of corrosion resistant formed 304 stainless steel. 5A max. 10-24VDC. IP65 rating.

WARNING: Cancer and Reproductive Harm - www.P65Warnings.ca.gov



LED PUSH BUTTON ON/OFF SWITCH

Aluminum/Injection Molded Nylon



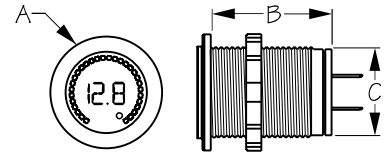
Bulk	Display	A	B	C	Max Amps	Volts	Wt.(lb.)	Std. Pack
n/a	K403065-1	1-3/16"	1-7/16"	1-7/8"	10	12-24	.25	10 ea

WARNING: Cancer and Reproductive Harm - www.P65Warnings.ca.gov



RAINBOW DISPLAY DIGITAL VOLTMETER

Injection Molded Nylon



Bulk	Display	A	B	C	Volts	Wt.(lb.)	Std. Pack
n/a	K421617-1	1-7/16"	3/4"	1-1/8"	5-15	.02	10 ea

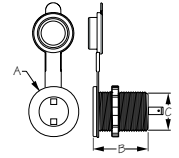
The Rainbow Display Digital Voltmeter gives the user quick, visual, color-coded voltage information. Red/orange means the voltage is too low. Green means voltage is normal. The same compact round size as a standard 12V receptacle, this voltmeter supports many installation options. Constructed of injection molded nylon. For use with 12V systems. IP65 rating.

⚠WARNING: Cancer and Reproductive Harm - www.P65Warnings.ca.gov



LED POWER SOCKET

Stamped Brass/Injection Molded Nylon & ABS



Bulk	Display	A	B	C	Volts	LEDs	LED Color	Wt.(lb.)	Std. Pack
n/a	K426127-1	1-7/16"	1-9/16"	1-1/16"	12-24	2	Blue	.08	10 ea

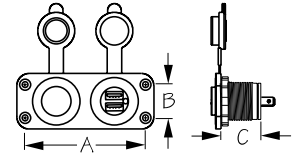
LED Power Socket adds power easily almost anywhere. 2 blue LEDs light up the interior. Installation is as easy as drilling a 1-1/8" hole, inserting the socket body, tightening the locking nut, and connecting the wires. Input 12-24VDC. 16A. IP65 rating.

⚠WARNING: Cancer and Reproductive Harm - www.P65Warnings.ca.gov



DOUBLE USB & POWER SOCKET PANEL

Injection Molded Nylon



Bulk	Display	A	B	C	Volts	Total Output	Wt.(lb.)	Std. Pack
n/a	K426505-1	3-1/2"	1"	1-5/8"	12-24	5V/4.8A	.16	10 ea

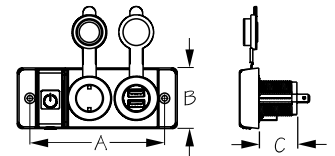
Double USB & Power Socket Panel charges two devices simultaneously. Accommodates both USB connectors and standard power sockets. USB total output is 4.8A, split 2.4A per side as needed. Enough power to charge phones, pads, and tablets quickly and efficiently. Protective dust cap extends the life of the charger. Includes fasteners and electrical connectors. Output DC: 5V/4.8A. Input: 12-24VDC. Maximum: 16A. RoHS compliant.

⚠WARNING: Cancer and Reproductive Harm - www.P65Warnings.ca.gov



DOUBLE USB & POWER SOCKET PANEL WITH BREAKER SWITCH

Injection Molded Nylon



Bulk	Display	A	B	C	Volts	Total Output	Wt.(lb.)	Std. Pack
n/a	K426506-1	4-1/4"	2"	1-1/4"	12	5V/4.8A	.24	10 ea

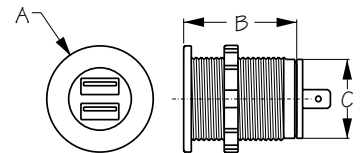
Double USB & Power Socket Panel with Breaker Switch charges two devices simultaneously. Featuring a 16A illuminating breaker switch. Accommodates both USB connectors and standard power sockets. USB total output is 4.8A, split 2.4A per side as needed. Enough power to charge phones, pads, and tablets quickly and efficiently. Protective dust cap extends the life of the charger. Includes fasteners and electrical connectors. Output: DC 5V/4.8A. Input: 12VDC. Maximum: 12V, 16A.

⚠WARNING: Cancer and Reproductive Harm - www.P65Warnings.ca.gov



DUAL USB POWER SOCKET

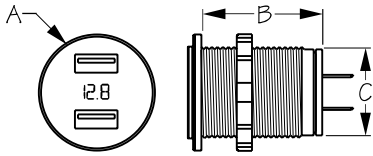
Injection Molded Nylon



Bulk	Display	A	B	C	Volts	Total Output	Wt.(lb.)	Std. Pack
n/a	K426515-1	1-7/16"	1-1/2"	1-1/16"	12-24	5V/4.8A	.08	10 ea

Dual USB Power Socket charges two devices simultaneously. USB total output is 4.8A, split 2.4A per side as needed. Enough power to charge phones, pads, and tablets quickly and efficiently. Protective dust cap extends the life of the charger. Installation is as easy as drilling a 1-1/8" hole, inserting the socket body, tightening the locking nut, and connecting the wires. Output DC 5V/4.8A. Input 12-24VDC. Blue LED illumination. IP65 rating. RoHS compliant.

⚠WARNING: Cancer and Reproductive Harm - www.P65Warnings.ca.gov



DUAL USB SOCKET/VOLTMETER W/ HIDDEN DISPLAY

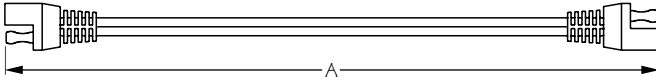
Injection Molded Nylon



Bulk	Display	A	B	C	Volts	Total Output	Wt.(lb.)	Std. Pack
n/a	K426517-1	1-7/16"	1-1/2"	1-1/16"	12-24	5V/4.8A	.08	10 ea

This Dual USB Socket charges two devices simultaneously while also displaying the batteries output. The total output 4.8A load is split 2.4A per side as needed. Enough power to charge phones, pads, and tablets quickly and efficiently. Protective dust cap extends the life of the charger. Constructed of injection molded nylon. Installation is as easy as drilling a 1-1/8" hole, inserting the socket body, tightening the locking nut, and connecting the wires. Output DC 5V/4.8A. Input 12-24VDC. Red LED display. IP65 rating.

⚠WARNING: Cancer and Reproductive Harm - www.P65Warnings.ca.gov



SAE POWER CABLE

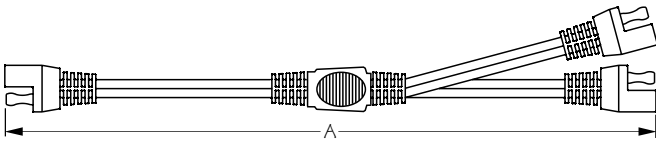
Injection Molded PVC



Bulk	Display	A (Length)	Volts	Amps	Wire Gauge	Wt.(lb.)	Std. Pack
n/a	K426901-1	12" (1')	12-24	20	14 Ga. AWM	.11	10 ea
n/a	K426903-1	36" (3')	12-24	20	14 Ga. AWM	.17	10 ea
n/a	K426906-1	72" (6')	12-24	20	14 Ga. AWM	.26	10 ea
n/a	K426916-1	144" (12')	12-24	20	14 Ga. AWM	.44	10 ea

2-Wire Polarized Electrical Connector is an SAE type, two-prong plug and socket connector set. Polarized to assure the proper mating of circuits, reducing the chance of accidental reverse polarity. Color coded 14-gauge duplex wire with bullet-type contact pins and end caps. Weather resistant connectors are vibration and strain resistant. Use of dielectric grease recommended to further protect circuit from salt spray, debris, and corrosion. Constructed of injection molded PVC. 20A. 12-24VDC.

⚠WARNING: Cancer and Reproductive Harm - www.P65Warnings.ca.gov



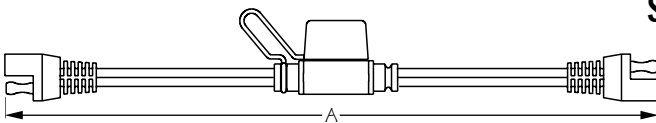
SAE POWER CABLE Y-SPLITTER

Injection Molded PVC



Bulk	Display	A (Length)	Volts	Amps	Wire Gauge	Wt.(lb.)	Std. Pack
n/a	K426920-1	12" (1')	12-24	20	14 Ga. AWM	.15	10 ea

⚠WARNING: Cancer and Reproductive Harm - www.P65Warnings.ca.gov



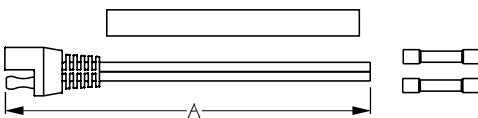
SAE POWER CABLE INLINE FUSE HOLDER

Injection Molded PVC



Bulk	Display	A (Length)	Volts	Amps	Wire Gauge	Wt.(lb.)	Std. Pack
n/a	K426925-1	12" (1')	12-24	20	14 Ga. AWM	.15	10 ea

⚠WARNING: Cancer and Reproductive Harm - www.P65Warnings.ca.gov



SAE POWER CABLE PLUG KIT (2-PACK)

Injection Molded PVC



Bulk	Display	A (Length)	Volts	Amps	Wire Gauge	Wt.(lb.)	Std. Pack
n/a	K426930-1	6"	12-24	20	14 Ga. AWM	.08	10 ea

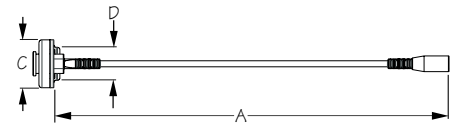
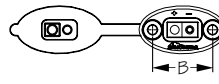
Display sets include: two (2) plugs, four (4) heat shrink and four (4) connectors.

⚠WARNING: Cancer and Reproductive Harm - www.P65Warnings.ca.gov



SAE POWER SOCKET (FRONT MOUNT)

Injection Molded PVC



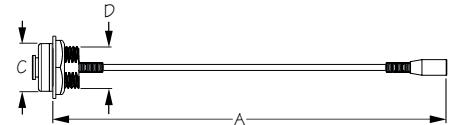
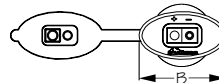
Bulk	Display	A	B	C	D	Volts	Amps	Wire Gauge	Wt.(lb.)	Std. Pack
n/a	K426950-1	8"	1-1/4"	1"	3/4"	12-24	20	14 Ga. AWM	.08	10 ea

⚠️WARNING: Cancer and Reproductive Harm - www.P65Warnings.ca.gov



SAE POWER SOCKET (SCREW BACK)

Injection Molded PVC



Bulk	Display	A	B	C	D	Volts	Amps	Wire Gauge	Wt.(lb.)	Std. Pack
n/a	K426955-1	8"	1-13/16"	1"	3/4"	12-24	20	14 Ga. AWM	.18	10 ea

⚠️WARNING: Cancer and Reproductive Harm - www.P65Warnings.ca.gov



SAE BATTERY BOX DIY KIT

Injection Molded PVC



Bulk	Display	Parts Included	Volts	Wire Gauge	Wt.(lb.)	Std. Pack
n/a	K426960-1	SAE Power Socket w/ Screw Back (1), Internal Wiring Harness (1), SAE 12V Charger/Tender (1)	12-24	14 Ga. AWM	.18	10 ea

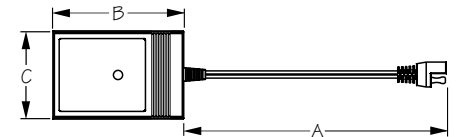
Perfect for the kayak fisherman that already has a water resistant box lying around the house, use this kit to retrofit the box to power your needs (box not included). Or purchase a plastic ammo case at your local outdoor and/or hardware store.

⚠️WARNING: Cancer and Reproductive Harm - www.P65Warnings.ca.gov



SAE 12V CHARGER / TENDER

Injection Molded PVC



Bulk	Display	A	B	C	Volts	Wire Gauge	Wt.(lb.)	Std. Pack
n/a	K426962-1	72" (6')	3-3/8"	2-1/4"	12	14 Ga. AWM	.38	10 ea

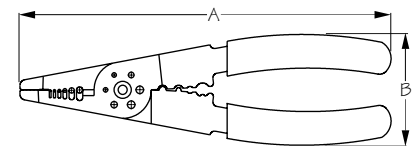
Compatible with any 12V SAE plug application, use charger/tender to keep your battery fully charged and ready for action!

⚠️WARNING: Cancer and Reproductive Harm - www.P65Warnings.ca.gov



WIRE STRIPPER & CRIMPER

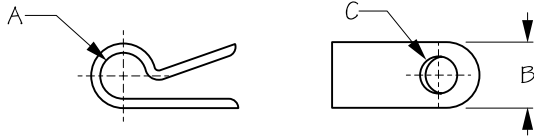
Powder Coated Steel



Bulk	Display	A	B	Wt.(lb.)	Std. Pack
n/a	K429900-1	8-1/8"	2-9/16"	.40	10 ea

Wire Stripper & Crimper tool crimps and strips 22-10 gauge wire. Constructed of powder coated steel. A great addition to any tool box.

⚠️WARNING: Cancer and Reproductive Harm - www.P65Warnings.ca.gov



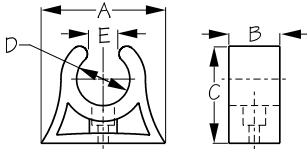
UL CABLE CLAMP

Injection Molded Nylon



Bulk	Display	Color	A	B	C	Wt.(lb.)	Std. Pack
K428231	n/a	Black	1/8"	3/8"	3/16"	.10	1 bag
K428232	n/a	Black	3/16"	3/8"	3/16"	.10	1 bag
K428233	n/a	Black	1/4"	3/8"	3/16"	.10	1 bag

Bulk bags include: (100) cable clamps.



POLE STORAGE CLIP

Injection Molded TPE



Bulk	Display	A	B	C	D	E	Fastener	Wt.(lb.)	Std. Pack
K491341	n/a	1-1/4"	7/16"	15/16"	1/2"	5/16"	#8 PH	.01	10 ea
K491343	n/a	1-1/2"	7/16"	1-1/16"	5/8"	3/8"	#8 PH	.01	10 ea
K491345	n/a	1-3/4"	3/4"	1-1/4"	3/4"	1/2"	#8 PH	.02	10 ea
K491347	n/a	1-15/16"	13/16"	1-1/2"	7/8"	9/16"	#8 PH	.03	10 ea
K491349	n/a	2-1/4"	3/4"	1-5/8"	1"	5/8"	#8 PH	.04	10 ea
K491351	K491351-1	2-15/16"	3/4"	2-1/8"	1-1/4"	13/16"	#8 PH	.08	10 ea / 10 pr
K491353	n/a	3-5/16"	3/4"	2-1/2"	1-1/2"	15/16"	#8 PH	.09	10 ea

Pole Storage Clips are available in sizes from 1/2" to 1-1/2". K491351 is most commonly used for paddles. Display sets include: two (2) storage clips.

▲WARNING: Cancer and Reproductive Harm - www.P65Warnings.ca.gov



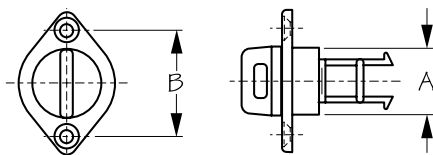
POLE STORAGE CLIP KIT

Injection Molded TPE



Bulk	Display	Parts Included	Wt.(lb.)	Std. Pack
n/a	K491351-9	Pole Storage Clip 1-1/4" (2), 8-32 X 1" PH (4), 8-32 Nyloc Nut (4), #8 Flat Washer (4), #8 Well Nut (4)	.26	10 kits

▲WARNING: Cancer and Reproductive Harm - www.P65Warnings.ca.gov



DRAIN PLUG

Injection Molded Nylon



Bulk	Display	A	B	Fastener	Wt.(lb.)	Std. Pack
K520010	K520010-1	1"	1-1/2"	#10 OH	.03	10 ea
K520021	K520021-1	Replacement Plug for K520010 Base			.01	10 ea / 10 pr
K520010FG	n/a	Foam Gasket for K520010 Drain Plug & Base			.01	100 ea

This Drain Plug is designed with a molded-in recess in the base to trap sealant in place and providing a more watertight seal. Replacement drain plug (K520021) fits most boats with a threaded drain molded into hull (Dagger, Liquidlogic, etc).

▲WARNING: Cancer and Reproductive Harm - www.P65Warnings.ca.gov



DRAIN PLUG KIT

Injection Molded Nylon



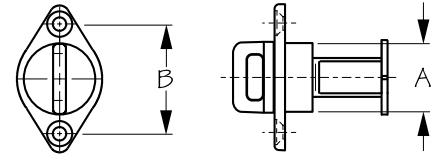
Bulk	Display	Parts Included	Wt.(lb.)	Std. Pack
n/a	K520010-9	Drain Plug and Base (1), Foam Gasket (1), 10-32 X 1" OH (2), 10-32 Nyloc Nut (2), #10 Flat Washer (2), #10 Well Nut (2)	.08	10 kits

▲WARNING: Cancer and Reproductive Harm - www.P65Warnings.ca.gov



DRAIN PLUG

Injection Molded Nylon



Bulk	Display	A	B	Color	Fastener	Wt.(lb.)	Std. Pack
K520015	K520015-1	1"	1-9/16"	Black	#10 PH	.03	10 ea
K520015W	n/a	1"	1-9/16"	White	#10 PH	.03	10 ea
K520016	K520016-1	Replacement Plug for K520015 Base		Black		.01	10 ea / 10 pr
K520015FG	n/a	Foam Gasket for K520015 Drain Plug & Base		Black		.01	100 ea

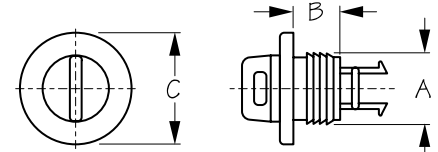
This Drain Plug is designed with a molded-in recess in the base, thus trapping the sealant in place and providing a more watertight seal. Fine thread design (see replacement fit list online).

⚠WARNING: Cancer and Reproductive Harm - www.P65Warnings.ca.gov



DRAIN PLUG

Injection Molded Nylon



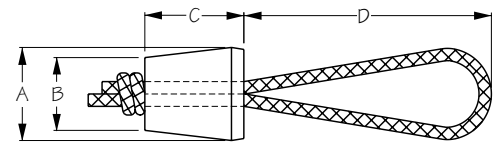
Bulk	Display	A	B	C	Fastener	Wt.(lb.)	Std. Pack
K520030	K520030-1	1"	11/16"	1-11/16"	None	.04	10 ea
K520021	K520021-1	Replacement Plug for K520030 Base				.01	10 ea / 10 pr

Designed to fit securely in a 1" hole without the use of fasteners. The ridges on the body of the Drain Plug are designed to keep the plug in place. Sealant should be applied prior to installation to make a watertight seal.



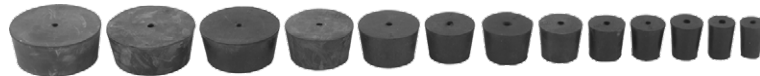
SCUPPER PLUGS

EPDM Rubber



Bulk	Display	A	B	C	D	Wt.(lb.)	Std. Pack
K520111	n/a	3/4"	1/2"	1"	2-1/2"	.02	10 ea
K520112	n/a	3/4"	5/8"	1"	2-1/2"	.03	10 ea
K520113	K520113-1	15/16"	11/16"	1"	2-1/2"	.05	10 ea / 10 pr
K520114	n/a	1"	3/4"	1"	2-1/2"	.07	10 ea
K520115	n/a	1-1/16"	7/8"	1"	2-1/2"	.09	10 ea
K520116	n/a	1-1/4"	1"	1"	2-1/2"	.11	10 ea
K520117	K520117-1	1-1/2"	1-1/8"	1"	2-1/2"	.13	10 ea / 10 pr
K520118	n/a	1-5/8"	1-5/16"	1"	2-1/2"	.15	10 ea
K520119	n/a	1-3/4"	1-1/2"	1"	2-1/2"	.17	10 ea
K520120	n/a	2"	1-5/8"	1"	2-1/2"	.19	10 ea
K520121	n/a	2-1/4"	1-15/16"	1"	2-1/2"	.21	10 ea
K520122	n/a	2-1/2"	2-1/8"	1"	2-1/2"	.23	10 ea
K520123	n/a	2-5/8"	2-1/4"	1"	2-1/2"	.25	10 ea

Display sets include: two (2) scupper plugs.

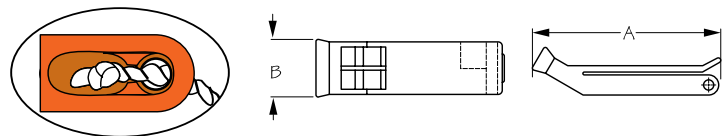


⚠WARNING: Cancer and Reproductive Harm - www.P65Warnings.ca.gov



LIFE JACKET WHISTLE

Injection Molded Polypropylene



Bulk	Display	Color	Lanyard Included	A	B	Wt.(lb.)	Std. Pack
K571260	n/a	Orange	No	2-3/4"	7/8"	.02	10 ea
n/a	K571260-1	Orange	Yes	2-3/4"	7/8"	.03	10 ea

Duotone whistle has no moving parts or balls that jam or corrode. Handy clip secures whistle until needed. A 36" lanyard is included with display packaging only.



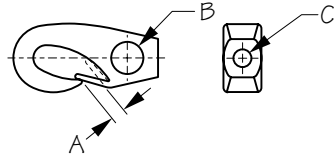
LOW-STRETCH UTILITY DECK LINE

Polyester



Bulk	Display	A (Dia.)	B (Length)	Color	Wt.(lb.)	Std. Pack
K615567BK	K615567BK-1	3/16"	1000' / 30'	Black	9.60 / 1.70	1 spool / 10 ea

Display packs include: one (1) 30' section of 3/16" polyester low stretch utility cord.

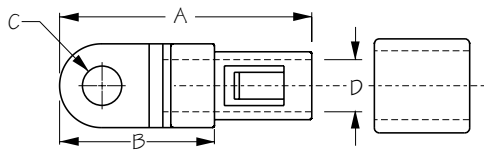


BUNGEE CLIP

Injection Molded Nylon



Bulk	Display	A	B	C	Color	Wt.(lb.)	Std. Pack
K652061	n/a	1/4"	7/16"	1/4"	Black	.02	10 ea
K652081	n/a	5/16"	9/16"	5/16"	Black	.02	10 ea



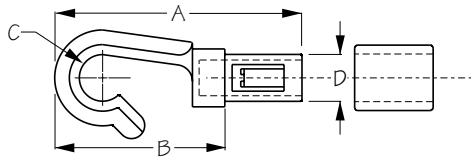
BUNGEE TERMINAL END W/ SLEEVE

Injection Molded Acetal



Bulk	Display	A	B	C	D (Bungee Size)	Wt.(lb.)	Std. Pack
K653161	K653161-1	1-1/4"	1/2"	3/16"	1/4"	.01	10 ea / 10 pr

Display sets include: two (2) bungee ends.



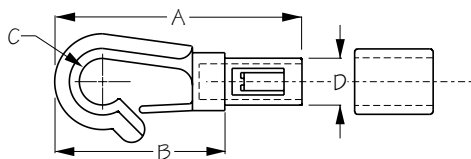
OPEN BUNGEE HOOK W/ SLEEVE

Injection Molded Acetal



Bulk	Display	A	B	C	D (Bungee Size)	Wt.(lb.)	Std. Pack
K653261	K653261-1	2"	1"	3/16"	1/4"	.01	10 ea / 10 pr

Display sets include: two (2) bungee ends.



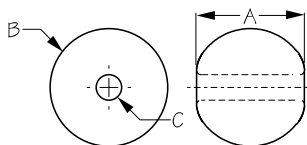
LOCKING BUNGEE HOOK W/ SLEEVE

Injection Molded Acetal



Bulk	Display	A	B	C	D (Bungee Size)	Wt.(lb.)	Std. Pack
K653361	K653361-1	2"	1"	3/8"	1/4"	.01	10 ea / 10 pr

Display sets include: two (2) bungee ends.



CLAMCLEAT® SHOCKCORD BALL

Injection Molded Polypropylene



Bulk	Display	A	B	C (Line Size)	Wt.(lb.)	Std. Pack
K654020	n/a	3/4"	3/4"	5-7mm	.01	10 ea



POLYPRO BUNGEE CORD

Natural Rubber with Polyethylene Cover



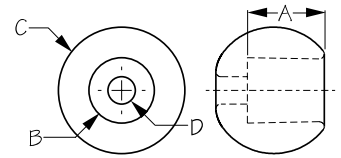
Bulk	Display	A (Dia.)	B (Length)	Color	Wt.(lb.)	Std. Pack
K655046BK	n/a	1/8"	500'	Black	4.20	1 spool
K655066BK	n/a	3/16"	500'	Black	5.40	1 spool
K655067BK	n/a	3/16"	1000'	Black	9.00	1 spool
K655086BK	K655086BK-1	1/4"	500' / 20'	Black	9.30 / 1.38	1 spool / 10 ea
K655087BK	n/a	1/4"	1000'	Black	18.81	1 spool

Display packs include: one (1) 20' section of 1/4" polypro bungee cord.



CLAMCLEAT® SHOCKCORD TOGGLE BALL

Injection Molding Polypropylene

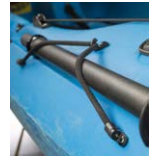


Bulk	Display	A	B	C	D (Line Size)	Wt.(lb.)	Std. Pack
K655140	n/a	5/16"	5/16"	11/16"	4 mm	.01	10 ea
K655160	n/a	9/16"	1/2"	7/8"	6 mm	.01	10 ea
K655180	n/a	11/16"	9/16"	1-1/4"	8 mm	.01	10 ea



PADDLE & POLE KEEPER KIT

Injection Molding Nylon/Polypro

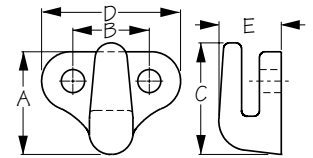


Bulk	Display	Parts Included	Wt.(lb.)	Std. Pack
n/a	K671400-9	Bungee Terminal End w/ Sleeve (4), Lashing Hook - One Hole (2), 1/4" Bungee - 18" (2), 10-32 X 3/4" PH (6), 10-32 Nyloc Nuts (6), #10 Flat Washer (6), Trifold Pop Rivet (6)	.34	5 kits



LASHING HOOK - TWO HOLE (LARGE)

Injection Molding Nylon



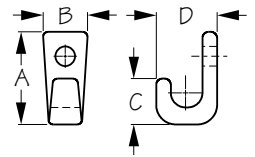
Bulk	Display	A	B	C	D	E	Color	Fastener	Wt.(lb.)	Std. Pack
K671415	n/a	7/8"	5/8"	15/16"	1-3/16"	9/16"	Black	#8 PH	.01	100 ea

Our recommended two-hole lashing hook!



LASHING HOOK - ONE HOLE

Injection Molding Nylon



Bulk	Display	A	B	C	D	Color	Fastener	Wt.(lb.)	Std. Pack
K671425	K671425-1	15/16"	7/16"	7/16"	5/8"	Black	#8 PH	.01	100 ea / 10 sets

Display sets include: six (6) lashing hooks. Our standard, best-selling "J" hook!



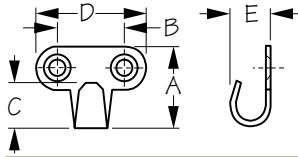
LASHING HOOK - ONE HOLE KIT

Injection Molding Nylon



Bulk	Display	Parts Included	Wt.(lb.)	Std. Pack
n/a	K671425-9	Lashing Hook - One Hole (4), 8-32 X 1" PH (4), 8-32 Nyloc Nut (4), #8 Flat Washer (4), #8 Well Nut (4)	.12	10 kits

⚠WARNING: Cancer and Reproductive Harm - www.P65Warnings.ca.gov

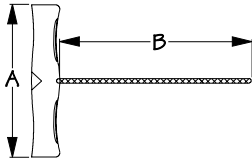


HAMMOCK HOOK

Stamped 304 Stainless Steel



Bulk	Display	A	B	C	D	E	Fastener	Wt.(lb.)	Std. Pack
K671460	n/a	15/16"	3/4"	1/2"	1-1/4"	1/2"	#8 OH	.02	10 ea



KAYAK CARRYING HANDLE & INSERT

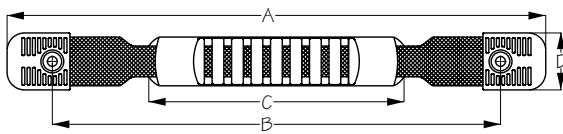
Injection Molded Polypropylene



Bulk	Display	A	B	Wt.(lb.)	Std. Pack
K736451	K736451-1	4-1/4"	7"	.05	100 ea / 10 ea
K736450	n/a	Handle without insert		.03	100 ea

Display pack includes a 18" handle cord. Cap has insert to accommodate custom logo for large volume orders.

⚠️WARNING: Cancer and Reproductive Harm - www.P65Warnings.ca.gov



WEBBING HANDLE W/ CAPS

Injection Molded Nylon/Webbing



Bulk	Display	A	B	C	D	Fastener	Wt.(lb.)	Std. Pack
K736462	K736462-1	11-1/2"	10"	5"	1"	#10 PH	.15	10 ea
K736463	K736463-1	15"	13-1/2"	5"	1"	#10 PH	.16	10 ea



WEBBING HANDLE W/ CAPS KIT

Injection Molded Nylon/Webbing



Bulk	Display	Parts Included	Wt.(lb.)	Std. Pack
n/a	K736462-9	Webbing Handle (1), End Cap (2), 10-32 X 1" PH (2), 10-32 Nyloc Nut (2), #10 Fender Washer (2)	.19	10 kits



PULL-UP STRAP HANDLE KIT

Nylon/Stainless Steel



Bulk	Display	Parts Included	Wt.(lb.)	Std. Pack
n/a	K736470-9	Webbing w/ Grab Loop - 74" X 1" (1), 1" Webbing Slide (1), Stainless Steel Eye Strap (1), 10-32 X 3/4" OH (2), 10-32 Nyloc Nut (2), #10 Fender Washer	.75	5 kits

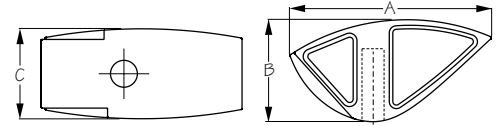
Whether you are looking to fish from a standing position on your sit-on-top kayak, or just need a little assistance getting out of the boat, the Pull-Up Strap Handle Kit can be easily installed on any kayak.



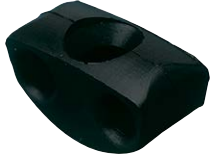


KAYAK DECK LINE GUIDE - ASYMMETRICAL

Injection Molded Nylon

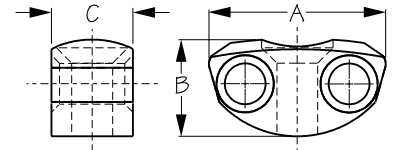


Bulk	Display	A	B	C	Wt.(lb.)	Std. Pack
K736500	n/a	1-3/8"	11/16"	5/8"	.01	100 ea



KAYAK DECK LINE GUIDE - SMALL

Injection Molded Nylon

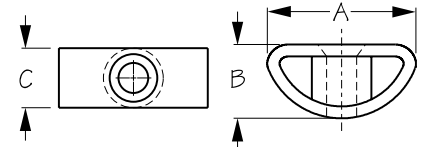


Bulk	Display	A	B	C	Fastener	Wt.(lb.)	Std. Pack
K736510	n/a	1-1/16"	9/16"	1/2"	#10 OH	.01	100 ea



KAYAK DECK LINE GUIDE - LARGE

Injection Molded Nylon

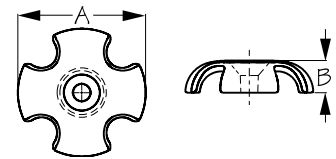


Bulk	Display	A	B	C	Fastener	Wt.(lb.)	Std. Pack
K736520	n/a	1-1/4"	5/8"	1/2"	#10 OH	.01	100 ea



KAYAK DECK LINE GUIDE - SLOTTED ROUND

Injection Molded Fiberglass/Nylon



Bulk	Display	A	B	Fastener	Wt.(lb.)	Std. Pack
K736530	K736530-1	1-1/2"	3/8"	#10 OH	.01	100 ea / 10 sets

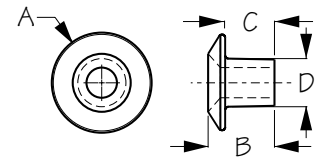
Display sets include: six (6) deck line guides.

⚠WARNING: Cancer and Reproductive Harm - www.P65Warnings.ca.gov



KAYAK DECK FITTING - OPEN ROUND

Injection Molded Polypropylene



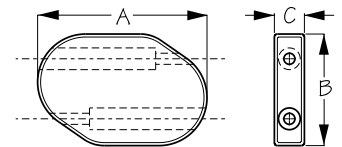
Bulk	Display	A	B	C	D	Fastener	Wt.(lb.)	Std. Pack
K736537	n/a	3/4"	1/2"	3/8"	7/16"	#10 OH	.01	100 ea

Useful as a 360° hook!

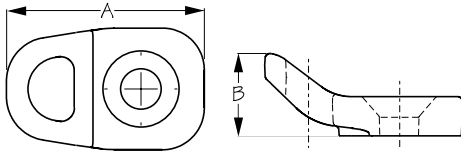


KAYAK DECK FITTING - BUNGEE BLOCK

Injection Molded Polypropylene



Bulk	Display	A	B	C	Wt.(lb.)	Std. Pack
K736540	n/a	1-7/16"	15/16"	1/4"	.05	100 ea



KAYAK DECK FITTING - SINGLE LOOP

Injection Molded Nylon



Bulk	Display	A	B	Fastener	Wt.(lb.)	Std. Pack
K736550	K736550-1	1-1/4"	1/2"	#10 OH	.01	100 ea / 10 sets

Display sets include: six (6) deck fittings.



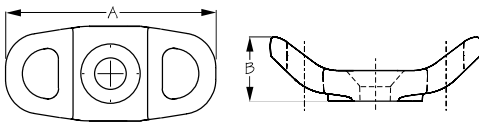
KAYAK DECK FITTING - SINGLE LOOP KIT

Injection Molded Nylon



Bulk	Display	Parts Included	Wt.(lb.)	Std. Pack
n/a	K736550-9	Kayak Deck Fitting - Single Loop (2), 10-32 X 1" OH (2), 10-32 Nyloc Nut (2), #10 Flat Washer (2), #10 Well Nut (2)	.08	10 kits

⚠WARNING: Cancer and Reproductive Harm - www.P65Warnings.ca.gov



KAYAK DECK FITTING - DOUBLE LOOP

Injection Molded Nylon



Bulk	Display	A	B	Fastener	Wt.(lb.)	Std. Pack
K736560	K736560-1	1-5/8"	1/2"	#10 OH	.01	100 ea / 10 sets

Display sets include: six (6) deck fittings.



KAYAK DECK FITTING - DOUBLE LOOP KIT

Injection Molded Nylon



Bulk	Display	Parts Included	Wt.(lb.)	Std. Pack
n/a	K736560-9	Kayak Deck Fitting - Double Loop (2), 10-32 X 1" OH (2), 10-32 Nyloc Nut (2), #10 Flat Washer (2), #10 Well Nut (2)	.08	10 kits

⚠WARNING: Cancer and Reproductive Harm - www.P65Warnings.ca.gov

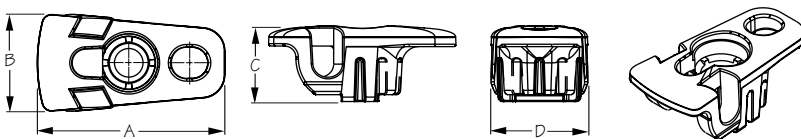


DOUBLE LOOP TRACK KIT

Injection Molded Nylon/304 Stainless Steel



Bulk	Display	Parts Included	Wt.(lb.)	Std. Pack
n/a	K736560T-9	Double Loop (2) 8-32 x 1/2" OH (2) 8-32 Track Fitting (2)	.09	10 kits



HLR DECK FITTING

Injection Molded Nylon



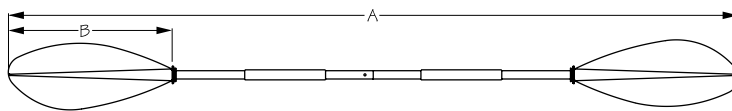
Bulk	Display	A	B	C	D	Fastener	Wt.(lb.)	Std. Pack
K736570	K736570-1	1-5/8"	13/16"	5/8"	13/16"	1/4"	.01	100 ea / 10 sets

Hook, Line, & Ringer Deck Fitting is handy for both deck or track mounts. Display sets include: six (6) deck fittings.



KAYAK PADDLE

Injection Molded Nylon/Aluminum



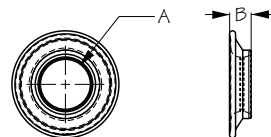
Bulk	Display	A	B	Wt.(lb.)	Std. Pack
n/a	K737100-1	220cm	18"	2.40	1 ea
n/a	K737150-1	230cm	18"	2.55	1 ea

⚠WARNING: Cancer and Reproductive Harm - www.P65Warnings.ca.gov



KAYAK PADDLE DRIP RINGS

Injection Molded TPE



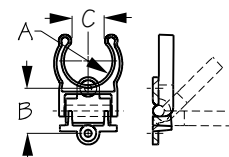
Bulk	Display	A	B	Wt.(lb.)	Std. Pack
K737290	K737290-1	1"	7/16"	.20	10 ea / 10 pr

⚠WARNING: Cancer and Reproductive Harm - www.P65Warnings.ca.gov



KAYAK FOLDING PADDLE CLIP

Injection Molded Nylon



Bulk	Display	A	B	C	Fastener	Wt.(lb.)	Std. Pack
K737345	n/a	3/4"	1"	13/32"	#8 OH	.02	10 ea
K737349	n/a	1"	1"	5/8"	#8 OH	.02	10 ea
K737350	K737350-1	1-1/8"	1"	25/32"	#8 OH	.03	10 ea / 10 pr
K737351	n/a	1-1/4"	1"	13/16"	#8 OH	.03	10 ea
K737353	n/a	1-1/2"	1"	15/16"	#8 OH	.04	10 ea
K737355	n/a	1-3/4"	1"	1-5/32"	#8 OH	.04	10 ea
K737357	n/a	2"	1"	1-9/32"	#8 OH	.04	10 ea
K737399	n/a	Base Only	1"	n/a	#8 OH	.01	10 ea

Available in sizes from 3/4" to 2". K737350 is most commonly used for paddles. Display sets include: two (2) paddle clips.



KAYAK FOLDING PADDLE CLIP KIT

Injection Molded Nylon



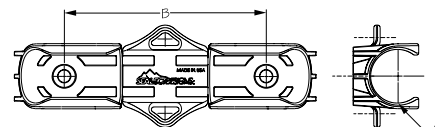
Bulk	Display	Parts Included	Wt.(lb.)	Std. Pack
n/a	K737350-9	Folding Paddle Clip 1-1/8" (2), 8-32 X 3/4" OH (4), 8-32 Nyloc Nut (4), #8 Flat Washer (4), #8 Well Nut (4)	.10	10 kits

⚠WARNING: Cancer and Reproductive Harm - www.P65Warnings.ca.gov



PERFORMANCE PADDLE CLIP

Injection Molded Nylon



Bulk	Display	A	B	Fastener	Wt.(lb.)	Std. Pack
K737361	n/a	1-1/8"	4"	1/4" OH	.07	10 ea

This one-piece paddle clip allows for the simple one handed storage of your paddle; features anti snag ramps to prevent the line from getting stuck under the clip when not in use, and leash attachment points for securing a paddle leash.



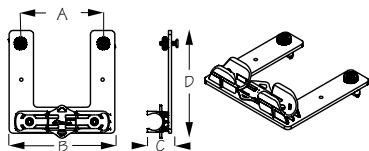
PERFORMANCE PADDLE CLIP KIT

Injection Molded Nylon



Bulk	Display	Parts Included	Wt.(lb.)	Std. Pack
n/a	K737361-9	Paddle Clip (1), 10-32 X 1" PH (2), 10-32 Nyloc Nut (2), #10 Flat Washer (2), #10 Well Nut (2)	.18	10 kits

⚠WARNING: Cancer and Reproductive Harm - www.P65Warnings.ca.gov



PADDLE CLIP EXTENSION, TRACK MOUNT

Carbon Fiber/Injection Molded Nylon



Bulk	Display	A	B	C	D	Wt.(lb.)	Std. Pack
n/a	K737362-9	5"	6-1/2"	1-11/32"	6-1/8"	.52	5 kits

Kayak anglers know that deck space is a precious commodity... there are always more things to mount. But what do you do with your paddle? If you mount a paddle clip on your track system, it always seems to get in the way. Sea-Lect Designs is now offering a solution with our Paddle Clip Extension. Mount to any track to bring the clip off the rim of the boat - and away from your gadgets - while still keeping your paddle close at hand!

⚠WARNING: Cancer and Reproductive Harm - www.P65Warnings.ca.gov



PADDLE CLIP & PREMIUM PADDLE LEASH KIT

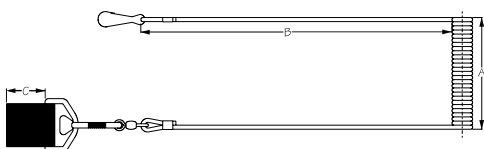
Injection Molded Nylon/Delrin/304 Stainless Steel



Bulk	Display	Parts Included	Wt.(lb.)	Std. Pack
n/a	K737366-9	Paddle Clip (1), Premium Paddle Leash (1), Hook and Loop Paddle Retainer (1), Fastener Pack (1)	.61	10 kits

Kit comes with everything that you need to keep your paddle secure while on the water. Hook and loop retainer fits between ears in clip and leash attachment points allow you to affix leash directly to clip.

⚠WARNING: Cancer and Reproductive Harm - www.P65Warnings.ca.gov



UTILITY PADDLE LEASH

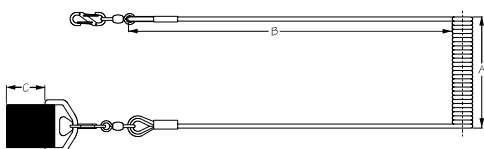
Injection Molded Nylon/Delrin/304 Stainless Steel



Bulk	Display	A	B	C	Wt.(lb.)	Std. Pack
n/a	K737370-1	48" (4')	12" (1')	1-1/8"	.12	10 ea

The Utility Paddle Leash comes with leash and paddle strap. "A" Dimension references the coil length when fully stretched.

⚠WARNING: Cancer and Reproductive Harm - www.P65Warnings.ca.gov



PREMIUM PADDLE LEASH

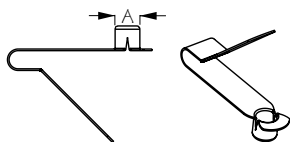
Injection Molded Nylon/Delrin/304 Stainless Steel



Bulk	Display	A	B	C	Wt.(lb.)	Std. Pack
n/a	K737375-1	48" (4')	12" (1')	1-1/8"	.15	10 ea

Premium Paddle Leash allows you to focus on reeling in your tournament winning fish and not managing your paddle. Includes Nite Ize® clips, stainless thimbles, leash, and paddle strap. "A" Dimension references the coil length when fully stretched.

⚠WARNING: Cancer and Reproductive Harm - www.P65Warnings.ca.gov

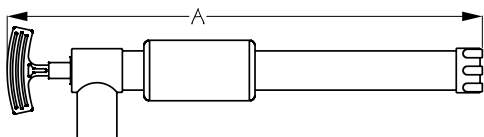


KAYAK PADDLE SNAP BUTTON

Stamped 304 Stainless Steel



Bulk	Display	A (Paddle Button Diameter)	Wt.(lb.)	Std. Pack
K737420	K737420-1	5/16"	.02	10 ea
K737450	K737450-1	3/8"	.02	10 ea



MANUAL BILGE PUMP

Injection Molded Nylon



Bulk	Display	A	SPG	GPM	Wt.(lb.)	Std. Pack
n/a	K737500-1	21"	10	6	1.2	5 ea

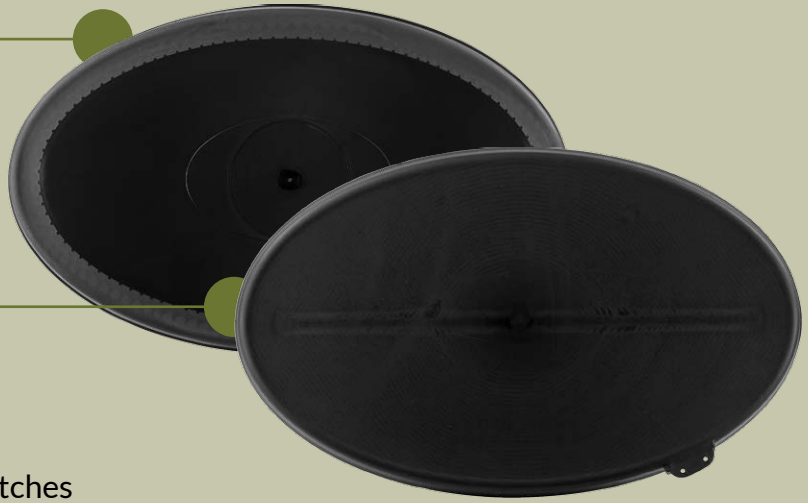
⚠WARNING: Cancer and Reproductive Harm - www.P65Warnings.ca.gov

PERFORMANCE

- Superior Watertight Seal
- Hard Dome Insert (UV Resistant)
- Buoyant Material
- Stylish Matte Finish
- Easy to Attach/Remove

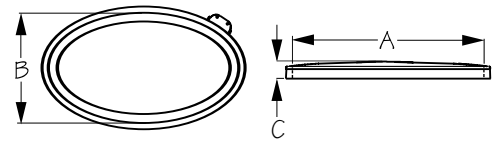
RECREATIONAL

- UV Resistant Rubber Design
- Pre-Stretched, Non-Sagging Fit
- Buoyant Material
- Economically Priced
- Commonly Used For Round Day Hatches



KAYAK HATCH COVERS - NARROW OVAL

Injection Molded Polymer



Bulk	Display	Description	A	B	C	Style	Wt.(lb.)	Std. Pack
n/a	K745250-1	Lid Only	18-3/8"	2"	11"	Performance	1.55	1 ea
K745259	K745259-1	Lid & Ring	18-3/8"	2"	11"	Performance	2.30	1 ea
n/a	K745350-1	Lid Only	18-3/8"	2"	11"	Recreational	1.55	1 ea
K745359	K745359-1	Lid & Ring	18-3/8"	2"	11"	Recreational	2.30	1 ea
K745155	K745155-1	Ring Only	18-3/8"	2"	11"	n/a	.75	1 ea

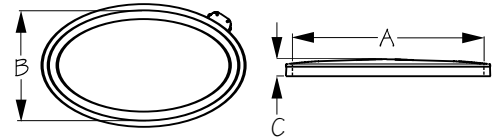
Compatible with Kayak Sport* 44cm/26cm oval hatch.

⚠WARNING: Cancer and Reproductive Harm - www.P65Warnings.ca.gov



KAYAK HATCH COVERS - WIDE OVAL

Injection Molded Polymer



Bulk	Display	Description	A	B	C	Style	Wt.(lb.)	Std. Pack
n/a	K745260-1	Lid Only	17-5/8"	2"	12-7/8"	Performance	1.70	1 ea
K745269	K745269-1	Lid & Ring	17-5/8"	2"	12-7/8"	Performance	2.50	1 ea
n/a	K745360-1	Lid Only	17-5/8"	2"	12-7/8"	Recreational	1.70	1 ea
K745369	K745369-1	Lid & Ring	17-5/8"	2"	12-7/8"	Recreational	2.50	1 ea
K745165	K745165-1	Ring Only	17-5/8"	2"	12-7/8"	n/a	.80	1 ea

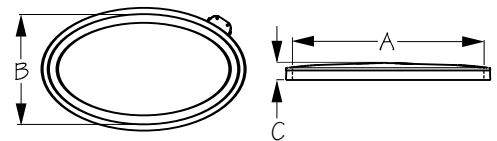
Compatible with Kayak Sport* 42cm/30cm oval hatch.

⚠WARNING: Cancer and Reproductive Harm - www.P65Warnings.ca.gov



KAYAK HATCH COVERS - VCP OVAL

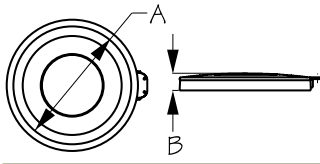
Injection Molded Polymer



Bulk	Display	Description	A	B	C	Style	Wt.(lb.)	Std. Pack
n/a	K745270-1	Lid Only	17-1/4"	2"	10"	Performance	1.30	1 ea
K745279	K745279-1	Lid & Ring	17-1/4"	2"	10"	Performance	2.05	1 ea
n/a	K745370-1	Lid Only	17-1/4"	2"	10"	Recreational	1.30	1 ea
K745379	K745379-1	Lid & Ring	17-1/4"	2"	10"	Recreational	2.05	1 ea
K745175	K745175-1	Ring Only	17-1/4"	2"	10"	n/a	.75	1 ea

Compatible with Valley Canoe Products* (VCP) oval hatch.

⚠WARNING: Cancer and Reproductive Harm - www.P65Warnings.ca.gov



KAYAK HATCH COVERS - 4" ROUND

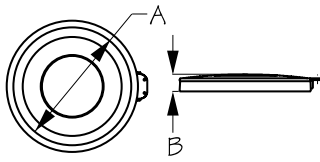
Injection Molded Polymer



Bulk	Display	Description	A	B	Style	Wt.(lb.)	Std. Pack
n/a	K746140-1	Lid Only	4-7/16"	1-3/8"	Performance	.25	1 ea
K746148	K746148-1	Lid & Ring w/Collar	4-7/16"	1-3/8"	Performance	.50	1 ea
K746149	K746149-1	Lid & Ring	4-7/16"	1-3/8"	Performance	.50	1 ea
n/a	K746240-1	Lid Only	4-7/16"	1-3/8"	Recreational	.25	1 ea
K746248	K746248-1	Lid & Ring w/Collar	4-7/16"	1-3/8"	Recreational	.50	1 ea
K746249	K746249-1	Lid & Ring	4-7/16"	1-3/8"	Recreational	.50	1 ea
K746044	K746044-1	Ring Only w/Collar	4-7/16"	1-3/8"	n/a	.25	1 ea
K746045	K746045-1	Ring Only	4-7/16"	1-3/8"	n/a	.25	1 ea

Compatible with Kayak Sport* 10cm round hatch.

▲WARNING: Cancer and Reproductive Harm - www.P65Warnings.ca.gov



KAYAK HATCH COVERS - 6" ROUND

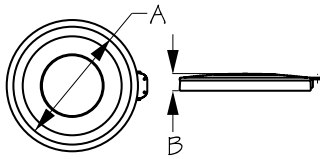
Injection Molded Polymer



Bulk	Display	Description	A	B	Style	Wt.(lb.)	Std. Pack
n/a	K746160-1	Lid Only	6-1/2"	1-3/8"	Performance	.30	1 ea
K746168	K746168-1	Lid & Ring w/Collar	6-1/2"	1-3/8"	Performance	.65	1 ea
K746169	K746169-1	Lid & Ring	6-1/2"	1-3/8"	Performance	.65	1 ea
n/a	K746260-1	Lid Only	6-1/2"	1-3/8"	Recreational	.30	1 ea
K746268	K746268-1	Lid & Ring w/Collar	6-1/2"	1-3/8"	Recreational	.65	1 ea
K746269	K746269-1	Lid & Ring	6-1/2"	1-3/8"	Recreational	.65	1 ea
K746064	K746064-1	Ring Only w/Collar	6-1/2"	1-3/8"	n/a	.35	1 ea
K746065	K746065-1	Ring Only	6-1/2"	1-3/8"	n/a	.35	1 ea

Compatible with Kayak Sport* 15cm round hatch.

▲WARNING: Cancer and Reproductive Harm - www.P65Warnings.ca.gov



KAYAK HATCH COVERS - 8" ROUND

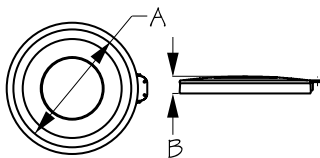
Injection Molded Polymer



Bulk	Display	Description	A	B	Style	Wt.(lb.)	Std. Pack
n/a	K746180-1	Lid Only	8"	1-3/8"	Performance	.55	1 ea
K746189	K746189-1	Lid & Ring	8"	1-3/8"	Performance	.90	1 ea
n/a	K746280-1	Lid Only	8"	1-3/8"	Recreational	.55	1 ea
K746289	K746289-1	Lid & Ring	8"	1-3/8"	Recreational	.90	1 ea
K746085	K746085-1	Ring Only	8"	1-3/8"	n/a	.35	1 ea / 2 ea

Compatible with Valley Canoe Products* (VCP) round day hatch.

▲WARNING: Cancer and Reproductive Harm - www.P65Warnings.ca.gov



KAYAK HATCH COVERS - 10" ROUND

Injection Molded Polymer



Bulk	Display	Description	A	B	Style	Wt.(lb.)	Std. Pack
n/a	K746200-1	Lid Only	10"	1-3/8"	Performance	.70	1 ea
K746209	K746209-1	Lid & Ring	10"	1-3/8"	Performance	1.10	1 ea
n/a	K746300-1	Lid Only	10"	1-3/8"	Recreational	.70	1 ea
K746309	K746309-1	Lid & Ring	10"	1-3/8"	Recreational	1.10	1 ea
K746105	K746105-1	Ring Only	10"	1-3/8"	n/a	.40	1 ea

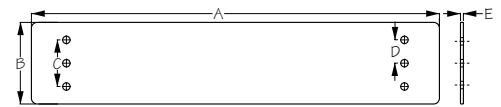
Compatible with Kayak Sport* 24cm round hatch.

▲WARNING: Cancer and Reproductive Harm - www.P65Warnings.ca.gov



KAYAK ADJUSTABLE FOOTBRACE HEIGHT ADJUSTER KIT

ABS



Bulk	Display	A	B	C	D	E	Wt.(lb.)	Std. Pack
n/a	K747010-1	17-1/2"	3-1/2"	2"	1"	1/8"	.25	5 pr

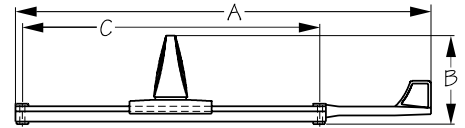
In cases where your foot peg makes contact with the underside of your deck, use a pair of Kayak Adjustable Footbrace Height Adjusters to move the mounting location down without the need to drill new mounting holes. Display sets include: two (2) footbrace height adjusters, four (4) TH screws, four (4) nyloc nuts, and four (4) bonded washers.

⚠WARNING: Cancer and Reproductive Harm - www.P65Warnings.ca.gov



KAYAK ADJUSTABLE FOOTBRACE

Injection Molded Polypropylene Fiberglass/Nylon



Bulk	Display	A	B	C	Flag	Rod Color	Wt.(lb.)	Std. Pack
K747100B	K747100B-1	20-1/4"	4-1/4"	14-1/2"	Standard	Black	1.40	5 pr

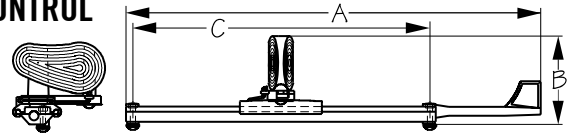
The Kayak Adjustable Footbrace has 10" of adjustable travel with only the flip of the lever. The two mounting holes (measuring 14-1/2" apart) fit most existing footbrace patterns, and the entire unit is designed to be maintenance free and self-cleaning while maintaining tremendous strength. In addition, the ergonomically designed pedals are extremely comfortable... even with bare feet. Thru-hole mounting for easy user installation. Patent #7,168,388.

⚠WARNING: Cancer and Reproductive Harm - www.P65Warnings.ca.gov



KAYAK ADJUSTABLE FOOTBRACE W/ RUDDER CONTROL

Injection Molded Polypropylene Fiberglass/Nylon



Bulk	Display	A	B	C	Flag	Rod Color	Wt.(lb.)	Std. Pack
K747200B	K747200B-1	20-1/4"	4-1/4"	14-1/2"	Standard	Black	2.00	5 pr

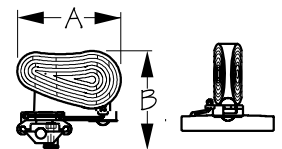
Our Kayak Adjustable Footbrace w/ Rudder Control offers the same great benefits as its fixed counterpart ... but you guessed it, with the added benefit of rudder control capabilities. One of the easiest footbraces to adjust while on the water.

⚠WARNING: Cancer and Reproductive Harm - www.P65Warnings.ca.gov



RUDDER CONTROL UPGRADE KIT

Injection Molded Nylon



Bulk	Display	A	B	Wt.(lb.)	Std. Pack
n/a	K747250-1	4-1/2"	4-1/8"	1.10	5 pr

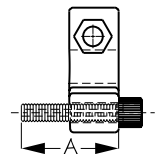
Kit includes left & right foot pedals as well as cable adjusters needed to upgrade a Kayak Adjustable Footbrace for use in a Rudder Control application. Simply slide off existing footpedals and slide these rudder controls pedals on and you are on your way to rudder assisted paddling.

⚠WARNING: Cancer and Reproductive Harm - www.P65Warnings.ca.gov



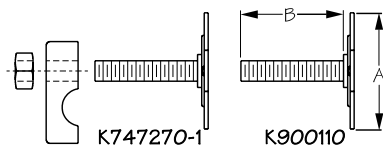
KAYAK FOOTBRACE CABLE ADJUSTER KIT

Injection Molded Nylon/Fiberglass/Stainless Steel



Bulk	Display	A (Adjustability)	Mount Type	Color	Wt.(lb.)	Std. Pack
K747260	K747260-1	1-5/16"	Thru-Hull	Black	.04	10 ea / 10 pr
K747265	K747265-1	1-5/16"	Stud	Black	.04	10 ea / 10 pr

Fits all Sea-Lect Designs Kayak Adjustable Footbraces w/ Rudder Control. The adjuster is great for fine tuning cable, and is available in thru-hull mount or stud mount versions.



STUD MOUNT & STUD MOUNT KIT

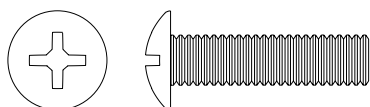
304 Stainless Steel/Nylon



Bulk	Display	A	B	Size / Thread	Style	Wt.(lb.)	Std. Pack
n/a	K747270-1	1-7/8"	1-1/4"	1/4"-20	Kit	.25	10 sets
K900110	n/a	1-7/8"	1-1/4"	1/4"-20	Stud	.05	100 ea

When you don't want to mount footbraces by drilling a hole through your kayak, simply fiberglass or glue on studs to act as the mounting bracket. K747270-1 can be used with K747100B, K747200B, and K747300B. K900110 can be used with K747510. Display sets include: four (4) studs, four (4) clamps, four (4) nyloc nuts, and two (2) cable adjuster clamps.

Truss Head (TH)



FOOTBRACE REPLACEMENT HARDWARE PACKS

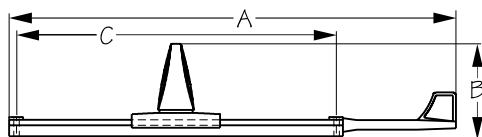
18-8 Stainless Steel



Bulk	Display	Size / Thread	Head	Length	Wt.(lb.)	Std. Pack
n/a	K747280-1	1/4"-20	Truss (TH)	1-1/4"	.05	10 sets
n/a	K747285-1	1/4"-20	Truss (TH)	1-1/2"	.05	10 sets

Display sets include: four (4) TH screws, four (4) nyloc nuts, and four (4) bonded washers.

⚠️ **WARNING:** Cancer and Reproductive Harm - www.P65Warnings.ca.gov



KAYAK ADJUSTABLE FOOTBRACE / LOW PROFILE

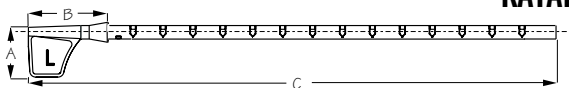
Injection Molded Polypropylene Fiberglass/Nylon



Bulk	Display	A	B	C	Flag	Rod Color	Wt.(lb.)	Std. Pack
K747300B	K747300B-1	20-1/4"	4-1/4"	14-1/2"	Standard	Black	1.30	5 pr

Enjoy the same benefits of our Kayak Adjustable Footbrace, but with a low profile foot peg. Great for sit-on-top kayaks.

⚠️ **WARNING:** Cancer and Reproductive Harm - www.P65Warnings.ca.gov

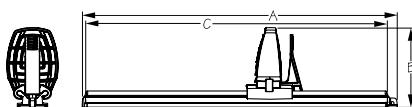


KAYAK ADJUSTABLE FOOTBRACE SHORT ROD SUB KIT

Injection Molded Polypropylene Fiberglass/Nylon



Bulk	Display	A	B	C	Wt.(lb.)	Std. Pack
n/a	K747380-1	1-5/8"	2-5/8"	17-3/4"	.25	5 pr



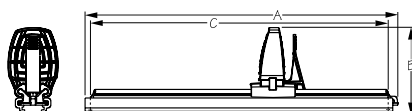
KAYAK RECREATIONAL FOOTBRACE

Injection Molded Polypropylene Fiberglass/Nylon



Bulk	Display	A	B	C	Fastener Size	Style Type	Wt.(lb.)	Std. Pack
K747510	K747510-1	15-5/8"	1-1/2"	14-1/2"	1/4"	Stud Mount	.95	5 pr
K747520	K747520-1	15-5/8"	1-1/2"	14-1/2"	1/4"	Thru-Hull	.95	5 pr

The Kayak Recreational Footbraces are designed to be maintenance free with tremendous strength... at an attractive price!



KAYAK RECREATIONAL FOOTBRACE W/ RUDDER CONTROL

Injection Molded Polypropylene Fiberglass/Nylon



Bulk	Display	A	B	C	D	Track Type	Wt.(lb.)	Std. Pack
K747600	K747600-1	15-5/8"	4-3/8"	14-1/2"	15-5/8"	Standard	1.55	5 pr

The addition of a channeled track to slide in turns our Kayak Recreational Footbrace into a rudder control footbrace.

⚠️ **WARNING:** Cancer and Reproductive Harm - www.P65Warnings.ca.gov



RUDDER CABLE TUBING (SPOOL)

Nylon



Bulk	Display	A (Tubing Size)	B (Spool Length)	C (Inner Dia.)	Color	Wt.(lb.)	Std. Pack
K748010	K748010-1	3/16"	2000' / 2x15'	5/32"	Black	12.8 / .20	1 spool / 10 ea

Display sets include: two (2) 15' sections of 3/16" rudder cable tubing and ten (10) 3/16" UL cable clamps (K428232).



RUDDER CABLE

Stainless Steel



Bulk	Display	A (Cable Size)	B (Spool Length)	Color	Wt.(lb.)	Std. Pack
K748020	K748020-1	1/16"	2000' / 2x15'	Steel	13.9 / .25	1 spool / 10 ea
K748025	n/a	1/16"	500'	Steel	7.0	1 spool
K748022	n/a	1/16"	250'	Steel	5.5	1 spool

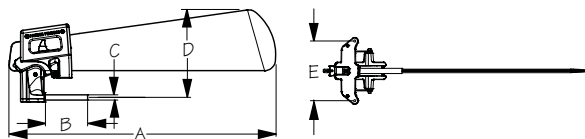
Display sets include: two (2) 15' sections of 1/16" rudder cable, four (4) thimbles (K171103), and eight (8) swedges (KOP74802).

⚠️WARNING: Cancer and Reproductive Harm - www.P65Warnings.ca.gov



TRUCOURSE™ RUDDER & FOOTBRACE KIT

Injection Molded Fiberglass/Nylon



Bulk	Display	A	B	C	D	E	Wt.(lb.)	Std. Pack	
n/a	K748100-3	17"	3"	3/8"	6-1/4"	4-1/4"	4.00	1 set	
n/a	K748151-1	Rudder Rigging Kit Only						.65	10 ea

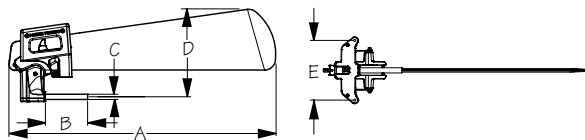
Kit includes TruCourse™ Rudder (K748150-3), Kayak Adjustable Footbrace w/ Rudder Control (K747200B-1) and Rudder Rigging Kit (K748151-1). Rudder Rigging Kit includes most items needed to attach a rudder to a kayak with an existing mounting gudgeon, including cable, tubing, pull line, cleats and fasteners. Mounting gudgeons sold separately.

⚠️WARNING: Cancer and Reproductive Harm - www.P65Warnings.ca.gov



TRUCOURSE™ RUDDER

Injection Molded Fiberglass/Nylon



Bulk	Display	A	B	C	D	E	Wt.(lb.)	Std. Pack	
K748150	K748150-3	17"	3"	3/8"	6-1/4"	4-1/4"	1.50	1 set	
n/a	K748175-1	Replacement Blade						.10	10 ea
n/a	K900139-1	Replacement Hex Key Packet						.01	10 set

The TruCourse™ Rudder allows for smooth and silent deployment of your rudder making it a favorite of kayak fishermen. TruCourse™ Rudder Patent #8,210,114.

⚠️WARNING: Cancer and Reproductive Harm - www.P65Warnings.ca.gov



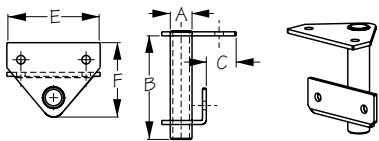
TruCourse™ Rudder

K748150-3



Trucourse™ Rudder Gudgeon

K748280-1



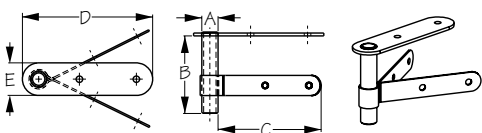
RUDDER MOUNTING GUDGEONS (FLAT STERN)

Stainless Steel



Bulk	Display	A	B	C	D	E	F	Wt.(lb.)	Std. Pack
K748200	K748200-1	3/8"	2-3/8"	11/16"	1-11/16"	2-1/8"	1-3/4"	.20	5 ea

This gudgeon is required to mount our Trucourse™ Rudder to kayaks with a flat stern without an existing mounting bracket.



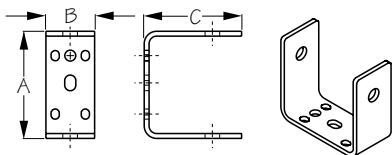
RUDDER MOUNTING GUDGEONS (POINTED STERN)

304 Stamped Stainless Steel



Bulk	Display	A	B	C	D	E	Wt.(lb.)	Std. Pack
K748250	K748250-1	3/8"	2-3/8"	3-1/4"	4"	1"	.25	5 ea

This gudgeon is required to mount our Trucourse™ Rudder to kayaks with a pointed stern without an existing mounting bracket.



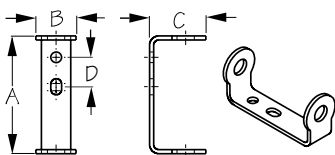
RUDDER MOUNTING GUDGEONS (UNIVERSAL BRACKET)

Stamped 304 Stainless Steel



Bulk	Display	A	B	C	Wt.(lb.)	Std. Pack
K748270	K748270-1	2-3/4"	1-1/4"	2-1/2"	.30	5 ea

This gudgeon is required to mount our Trucourse™ Rudder to kayaks with pre-tapped mounting holes with screw inserts found on the stern of the kayak (includes Wilderness System, Necky, Ocean Kayak, Emotion, and more).



TRUCOURSE™ RUDDER GUDGEON

304 Stamped Stainless Steel



Bulk	Display	A	B	C	D	Wt.(lb.)	Std. Pack
K748280	K748280-1	2-3/4"	15/16"	1-5/16"	11/16"	.25	5 ea

Gudgeon required to mount our Trucourse™ Rudder to kayaks with a flat stern. Fits Jackson Kayaks rudder ready hulls.



DECK BUNGEE KIT

Injection Molded Nylon/Polypro



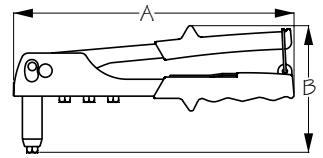
Bulk	Display	Parts Included	Wt.(lb.)	Std. Pack
n/a	K749530-9	1/4" Bungee - 11' (1), 3/8" Pad Eye (6), 8-32 X 3/4" OH (12), #8-32 Nyloc Nut (12), #8 Flat Washer (12)	.50	5 kits

This kit comes with everything that you need to add an additional deck bungee to any kayak. Just set your pattern, drill your holes and tie your knots and you are ready to go.



RIVET TOOL

Stamped Steel



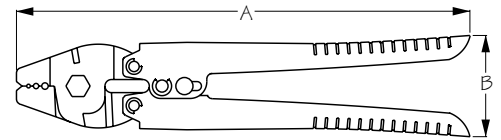
Bulk	Display	A	B	Rivet Size Range	Wt.(lb.)	Std. Pack
n/a	K799100-1	10"	3-3/4"	3/32"-3/16"	1.00	5 ea

⚠WARNING: Cancer and Reproductive Harm - www.P65Warnings.ca.gov



CUTTER/CRIMPER TOOL

Stamped Steel



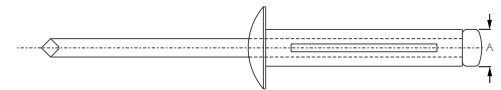
Bulk	Display	A	B	Wt.(lb.)	Std. Pack
n/a	K799150-1	10-1/4"	2-1/4"	1.00	5 ea

⚠WARNING: Cancer and Reproductive Harm - www.P65Warnings.ca.gov



DOMe HEAD TRI-FOLD RIVETS, 3/16" BLACK

Aluminum



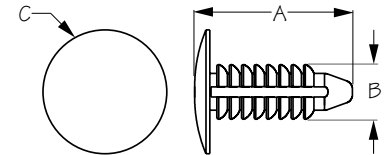
Bulk	Display	A (Hole Dia.)	Grip Range	Wt.(lb.)	Std. Pack
K799555BK	K799555BK-1	3/16"	1/32"-1/2"	.01	1 bag / 10 sets

Bulk bags include: one hundred (100) tri-fold rivets. Display sets include: ten (10) tri-fold rivets.



PINE TREE RIVET

Nylon



Bulk	Display	A	B (Hole Size)	C	Grip Range	Wt.(lb.)	Std. Pack
K799600	n/a	7/16"	1/4"	3/4"	1/32"-1/4"	.01	100 ea
K799610	n/a	3/4"	1/4"	3/4"	1/32"-1/2"	.01	100 ea

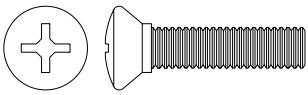
Bulk bags include: one hundred (100) pine tree rivets.



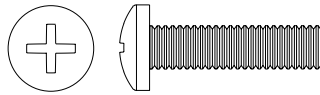
Fastener Packs

Find all the necessary fasteners needed for our product line installation as well as replacing existing fasteners for deck hardware, footbraces, or any other application

Oval Head (OH)



Pan Head (PH)



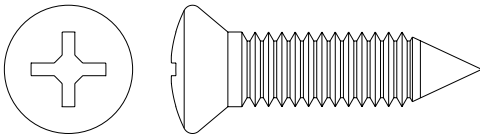
FASTENER PACKS

18-8 Stainless Steel



Bulk	Display	Size / Thread	Head	Length	Wt.(lb.)	Std. Pack
n/a	K931104-1	#8-32	Oval (OH)	3/4"	.05	10 sets
n/a	K931105-1	#8-32	Oval (OH)	1"	.05	10 sets
n/a	K931106-1	#8-32	Oval (OH)	1-1/4"	.05	10 sets
n/a	K931204-1	#10-32	Oval (OH)	3/4"	.05	10 sets
n/a	K931205-1	#10-32	Oval (OH)	1"	.05	10 sets
n/a	K931206-1	#10-32	Oval (OH)	1-1/4"	.05	10 sets
n/a	K931304-1	1/4"-20	Oval (OH)	3/4"	.05	10 sets
n/a	K931305-1	1/4"-20	Oval (OH)	1"	.05	10 sets
n/a	K931306-1	1/4"-20	Oval (OH)	1-1/4"	.05	10 sets
n/a	K932103-1	#8-32	Pan (PH)	1/2"	.05	10 sets
n/a	K932104-1	#8-32	Pan (PH)	3/4"	.05	10 sets
n/a	K932105-1	#8-32	Pan (PH)	1"	.05	10 sets
n/a	K932106-1	#8-32	Pan (PH)	1-1/4"	.05	10 sets
n/a	K932203-1	#10-32	Pan (PH)	1/2"	.05	10 sets
n/a	K932204-1	#10-32	Pan (PH)	3/4"	.05	10 sets
n/a	K932205-1	#10-32	Pan (PH)	1"	.05	10 sets
n/a	K932206-1	#10-32	Pan (PH)	1-1/4"	.05	10 sets
n/a	K932304-1	1/4"-20	Pan (PH)	3/4"	.05	10 sets
n/a	K932305-1	1/4"-20	Pan (PH)	1"	.05	10 sets
n/a	K932306-1	1/4"-20	Pan (PH)	1-1/4"	.05	10 sets

Display sets include: six (6) machine screws, six (6) nyloc nuts, and six (6) flat washers.



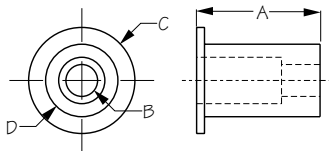
TAPPING SCREW PACKS

18-8 Stainless Steel



Bulk	Display	Size / Thread	Head	Length	Wt.(lb.)	Std. Pack
n/a	K936104-1	#8	Oval (OH)	3/4"	.05	10 sets
n/a	K936105-1	#8	Oval (OH)	1"	.05	10 sets
n/a	K936204-1	#10	Oval (OH)	3/4"	.05	10 sets
n/a	K936205-1	#10	Oval (OH)	1"	.05	10 sets

Display sets includes: six (6) tapping screws.



WELL NUTS

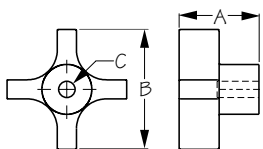
Rubber/Brass



Bulk	Display	A	B (Size / Thread)	C	D	Grip Range	Wt.(lb.)	Std. Pack
K938501	K938501-1	1/2"	#8-32	7/16"	5/8"	1/32"-5/32"	.03	1 bag / 10 sets
K938502	K938502-1	5/8"	#10-32	1/2"	3/8"	1/32"-1/4"	.03	1 bag / 10 sets
K938503	K938503-1	13/16"	1/4"-20	11/16"	1/2"	1/32"-1/4"	.04	1 bag / 10 sets

Bulk bags include: one hundred (100) well nuts. Display sets includes: six (6) well nuts.

▲WARNING: Cancer and Reproductive Harm - www.P65Warnings.ca.gov



THREADED FOUR ARM KNOBS

Thermoplastic/Brass



Bulk	Display	A	B	C (Thread)	Wt.(lb.)	Std. Pack
K938553	n/a	1"	1-1/2"	1/4"-20	.02	10 ea

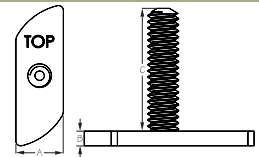
Bulk bags include: ten (10) threaded knobs.

▲WARNING: Cancer and Reproductive Harm - www.P65Warnings.ca.gov



TRACK FASTENERS STUD

Formed 304 Stainless Steel



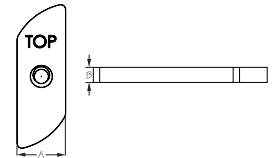
Bulk	Display	Thread	A	B	C	Wt.(lb.)	Std. Pack
K938603	K938603-1	1/4"-20	1/2"	1/8"	1"	.06	10 ea / 10 sets
K938604	K938604-1	1/4"-20	1/2"	1/8"	1-1/2"	.07	10 ea / 10 sets

Bulk parts sold in multiples of 10 or bags of 100. Display sets include: six (6) track fasteners studs.



TRACK FASTENERS TAPPED

Formed 304 Stainless Steel



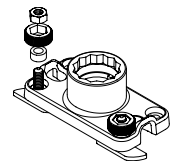
Bulk	Display	Thread	A	B	Wt.(lb.)	Std. Pack
K938611	K938611-1	#8-32	1/2"	1/8"	.03	10 ea / 10 sets
K938613	K938613-1	1/4"-20	1/2"	1/8"	.03	10 ea / 10 sets

Fits all kayak gear track systems. Bulk parts sold in multiples of 10 or bags of 100. Display sets include: six (6) track fasteners tapped.



TRACK FASTENER KIT

Formed 304 Stainless Steel



Bulk	Display	Parts Included	Wt.(lb.)	Std. Pack
n/a	K938615-1	Track Fastener Stud (2) 1/4" Bushing (2) Brass 1/4"-20 Nut w/ Knob Housing (2)	.10	10 ea

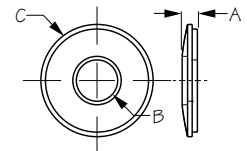
Attach almost any item which uses a 1/4"-20 thread to your track system using this fastener kit. Simply slide the base into your track, and you're ready-set to attach any cleat, pad eye, mount, or rod holder to your boat! Great for mounting the Triple Thread Rod Holder K325412 to an accessory track.

⚠WARNING: Cancer and Reproductive Harm - www.P65Warnings.ca.gov



BONDED WASHER PACKS

18-8 Stainless Steel/Rubber



Bulk	Display	A	B (Size)	C	Wt.(lb.)	Std. Pack
n/a	K939301-1	1/8"	#8	1/2"	.02	10 sets
n/a	K939302-1	1/8"	#10	5/8"	.02	10 sets
n/a	K939303-1	1/8"	1/4"	5/8"	.03	10 sets

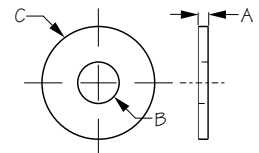
Display sets include: (6) bonded washers.

⚠WARNING: Cancer and Reproductive Harm - www.P65Warnings.ca.gov



FENDER WASHER PACKS

18-8 Stainless Steel



Bulk	Display	A	B (Size)	C	Wt.(lb.)	Std. Pack
n/a	K939501-1	1/32"	#8	3/4"	.02	10 sets
n/a	K939502-1	1/32"	#10	1"	.02	10 sets
n/a	K939503-1	1/32"	1/4"	1"	.03	10 sets

Display sets include: (6) fender washers.

Sea-Lect Designs Hardware Kits

What are “-9” hardware kits? We have taken our most popular hardware items and made them into kits. All kits include hardware items, fasteners, and installation instructions that simplify what retailers must stock in order to meet their customer’s needs. When your customer leaves the shop with one of our kits, they will have all the necessary parts and knowledge necessary to successfully install any of our kits.



SEALECTDESIGNS Engineering Innovations for Outdoor Enthusiasts

Fasteners Included

KIT INCLUDES

- x1 Drain Plug & Base
- x1 Gasket
- x2 #10 Well Nut
- x2 10-32 Nyloc Nut
- x2 #10 Washer
- x2 10-32 x 1" OH

RECOMMENDED TOOLS

- Variable Speed Drill with:
 - 3/16" Bit (nuts & washers)
 - 3/8" Bit (well nuts)
 - 1" Hole Saw (both)
- 3/8" Wrench
- Phillips Head Screwdriver
- Marking Pen

Nuts & Washers

For installations with access to backside of mounting surface, use nuts & washers.

Well Nuts

For installations without access to backside of mounting surface, use well nuts.

Install Visualization

The front of every kit shows what the successfully completed project should look like, helping you find the perfect item for your specific needs.

Kit Includes

All instructions show everything included in the package, assuring that the kit contains everything required to install the product on the first try.

Recommended Tools

When starting a project it helps to know from the start everything you will need to finish the project in a timely manner. We have listed all the tools and sizes required to do the job right.

Choosing your Fastener

Since not all projects are the same, we have included two styles of fasteners to insure that you can complete the project whether you have access to the backside of the mounting surface or not.

Easy to Read Instructions

Illustrated installation instructions provide easy to follow steps so you spend less time with a screwdriver and more time with a paddle.



Why Well Nuts?

At Sea-Lect Designs, we have chosen to use well nuts over pop-riquets in almost every case. We encourage you to use nuts and bolts whenever the backside of the mounting surface is accessible. For those times when you can't reach the backside, we've included well nuts as an alternative. Here is why we've chosen well nuts instead of pop-riquets for those hard-to-reach installs:

Usability

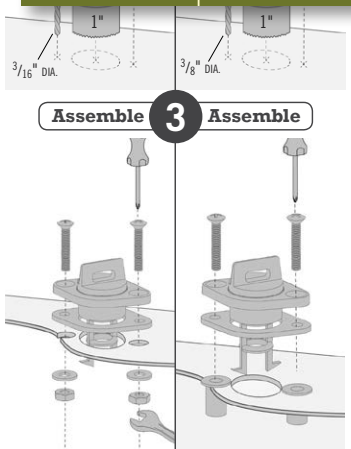
Requires common household tools as opposed to a special pop-riquet gun.

Strength

Better holding strength than pop-riquets.

Water Tightness

A well nut seal is water-tight, whereas a pop-riquet seal is not.





PO Box 67 Everett, WA 98206
(425) 252-2149 · info@sealctdesigns.com

www.sealctdesigns.com